



PSI

Volleyball

-
- PLAYOFFS
 - ALIGNMENT ERRORS
 - SIGNALS

Getting ready for volleyball

https://youtu.be/1E6mRiw_mlw



2023-24 Training

~~Meeting 1 – Tuesday, July 18 – Zoom~~

~~Meeting 2 – THURSDAY, Aug 3 – In Person~~

~~Meeting 3 – Tuesday, Aug 8 – Zoom~~

Meeting 4 - Tuesday, Aug 15 – In Person

5 quizzes (count as 1 meeting)

Sportsmanship Game or Jamboree = 1 meeting. (Aug 19, 21)

Jamborees

The Volleyball Jamborees are on Sat, Aug 19

Varsity – 9 AM Soledad HS – Kevin Long & Larry Eady

JV – 9 AM Alvarez HS

JV – 9 AM Monte Vista Christian School

~~Fresh – 9:30 AM Watsonville HS *Cancelled*~~

Quizzes

Designed to get you thinking about volleyball

Participation counts: Completing all 5 quizzes counts as attending a meeting.

They're pretty easy, but read the question!

All Quizzes and the Exam are available now.

Arbiter > PSI Central Hub > Testing

Certification Exam

80% to pass

Mandatory for post season assignments

11 people have completed the exam so far.

Frichette, James
Hagn, Skip
Houston, James
Johnson, Debbie
McHenry, Moe
Nachtrieb, Kaitlin
Null, Lance
Pratt, Jeffery
Radford, Arthur
Robe, Bob
Sanchez Mora, Esteban

Late schedule adds

ADs are still updating their schedules

There may very well be more early season matches added.

We will assign the officials to these early games ASAP.

We're still waiting on the middle school schedules to be entered.

Tournaments – Dates

Arbiter:

Aug 26	St. Francis SCP	Varsity	8am, 1pm shifts	(Covered)
Sept 2	Watsonville	JV	7:30, 12:30 shifts	(4/4)
Sept 23	Watsonville	Frosh Soph	7:30, 12:30 shifts	(4/4)
Sept 30	Rancho San Juan	Varsity	8am, 12:30 shifts	(3/3)

To Do List

- Update your blocks
- Accept or Decline games
- Contact your partner.



Playoffs

LOOKING AHEAD TO THE POST SEASON

Post Season

OCTOBER							2023		NOVEMBER						
SUN	MON	TUE	WED	THU	FRI	SAT	SUN	MON	TUE	WED	THU	FRI	SAT		
1	2	3	4	5	6	7				1	2	3	4		
8	9	10	11	12	13	14	5	6	7	8	9	10	11		
15	16	17	18	19	20	21	12	13	14	15	16	17	18		
22	23	24	25	26	27	28	19	20	21	22	23	24	25		
29	30	31					26	27	28	29	30				

DECEMBER						
SUN	MON	TUE	WED	THU	FRI	SAT
					1	2
3	4	5	6	7	8	9
10	11	12	13	14	15	16
17	18	19	20	21	22	23
24	25	26	27	28	29	30
31						

2023 CALENDAR.COM CALENDAR 2023

CCS Playoffs - Dates

Girls: (Division 1-5)

Round 1 - Saturday, Oct 28

Quarterfinals - Tuesday, Oct 31

Semifinals - Thursday, Nov 2

Finals - Saturday, Nov 4

Open Div: 10/28, 11/1, 11/4

Boys:

Round 1 - Monday, May 6

Quarterfinals - Tuesday, May 7

Semifinals - Thursday, May 9

Finals - Saturday, May 11

CCS Playoffs - Requirements

All officials:

- Passing grade on Certification exam (80% or better)

Priority Treatment for officials who attended 4/6 meetings.

CIF Playoffs

Girls:

NorCal: Nov 7, Nov 9, Nov 11, Nov 14

Finals: Nov 17-18 at TBD, CA.

Boys:

NorCal: May 14, May 16, May 18



Player Alignment

OVERLAP RECAP

Alignment

At the moment of serve:

All players, including the libero shall be in correct serving order.

For the serving team, the server does not count for alignment.



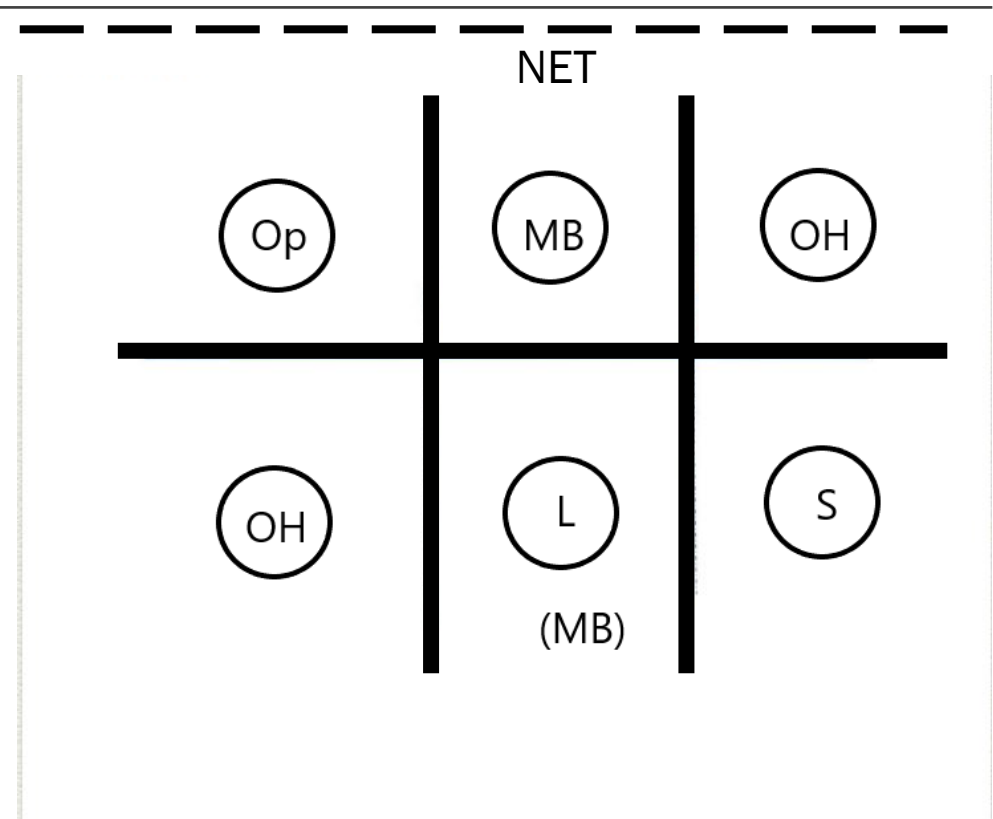
Alignment

Two directions of overlap:

Front – Back

Side – Side

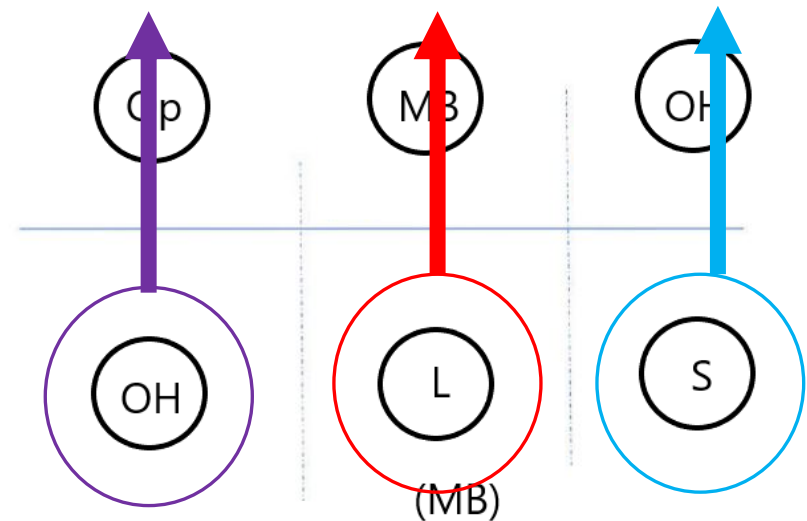
Only with the players in the same row or column.



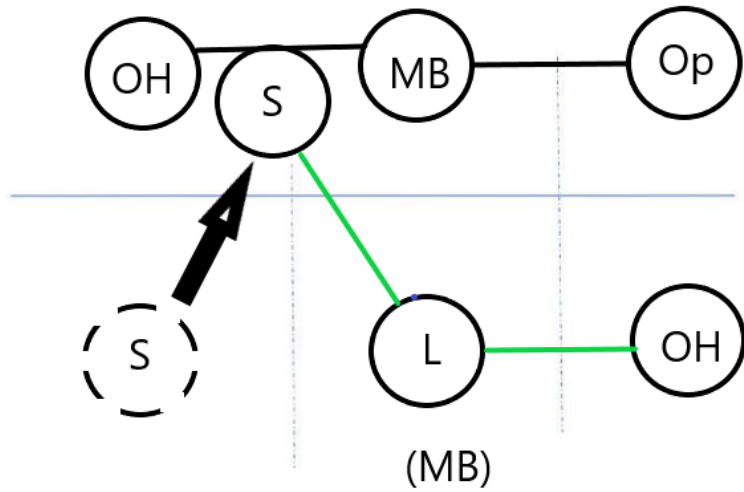
Alignment

Front – Back

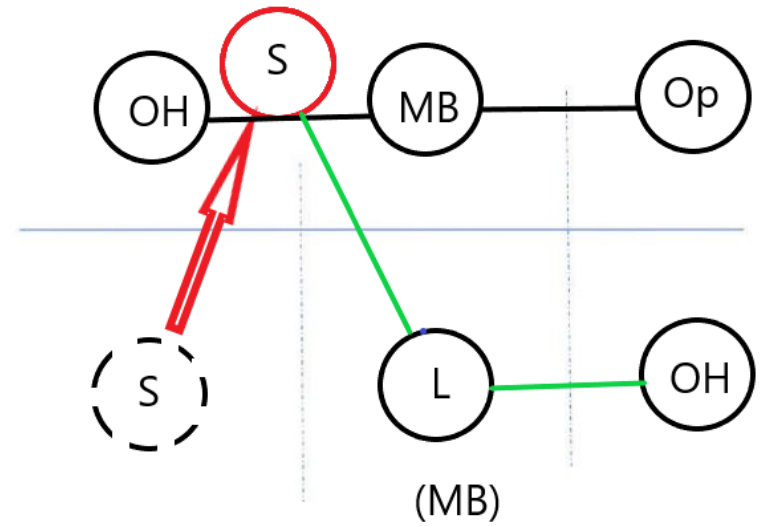
The back row player may not start closer to the net than their corresponding front row player.



Alignment



Legal

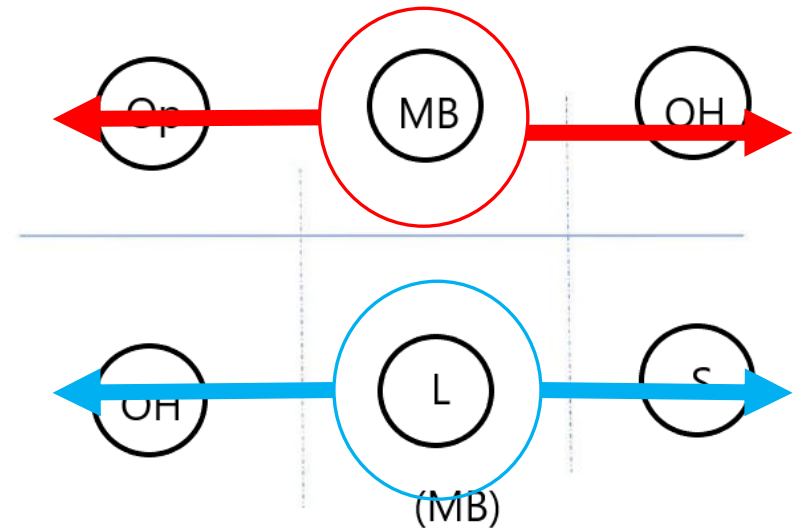


Illegal

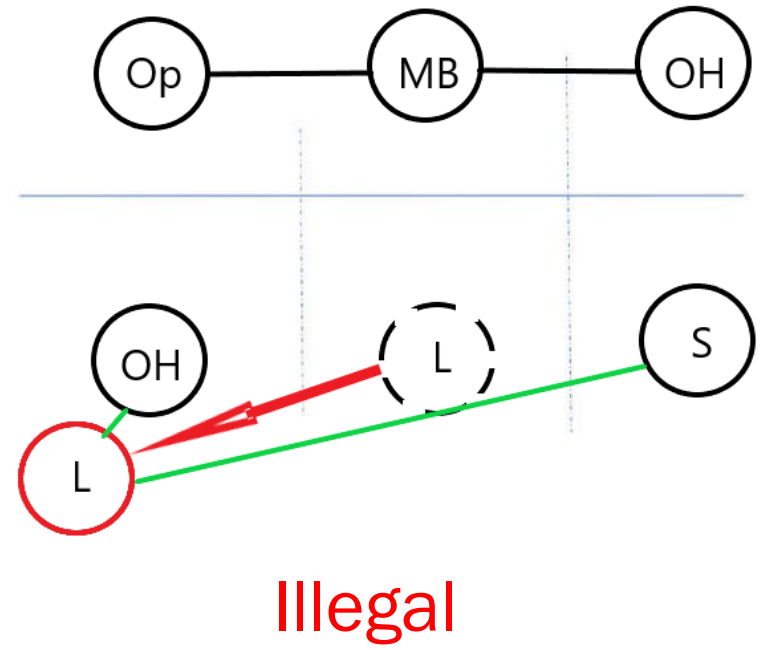
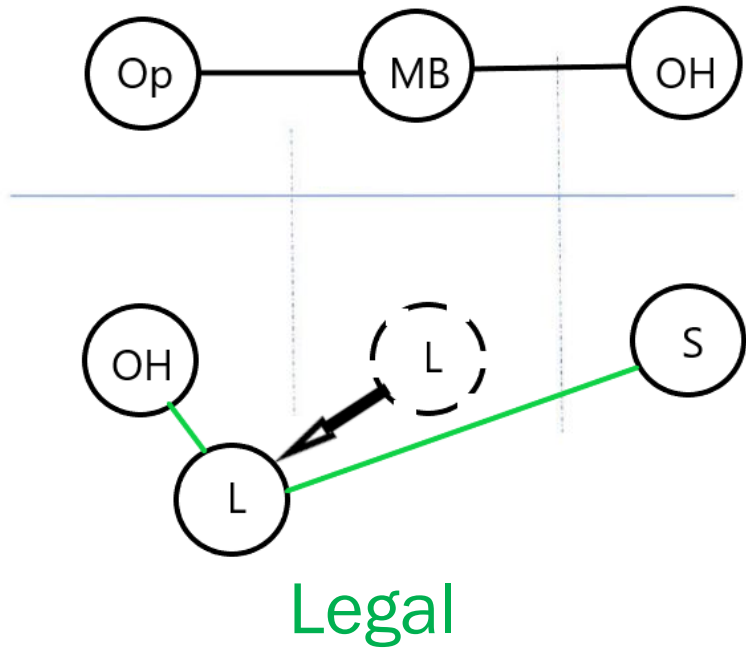
Alignment

Side - Side

Middle player cannot be closer to the side than the corresponding side player.

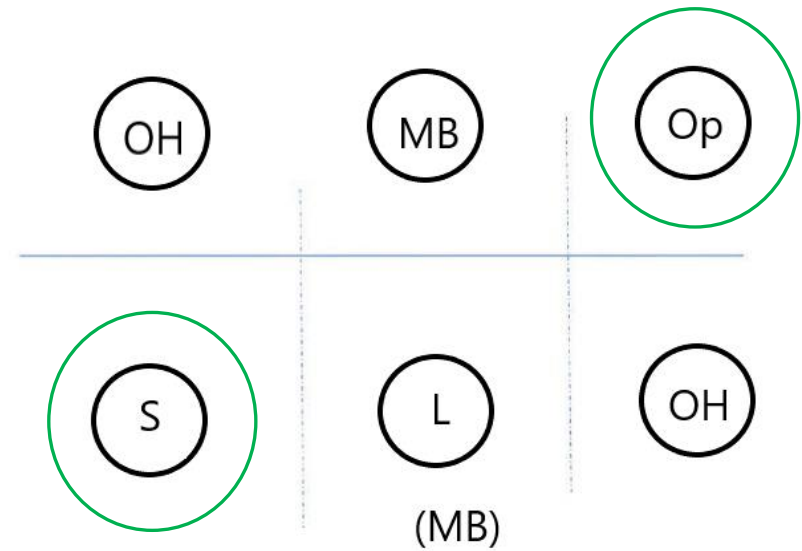


Alignment



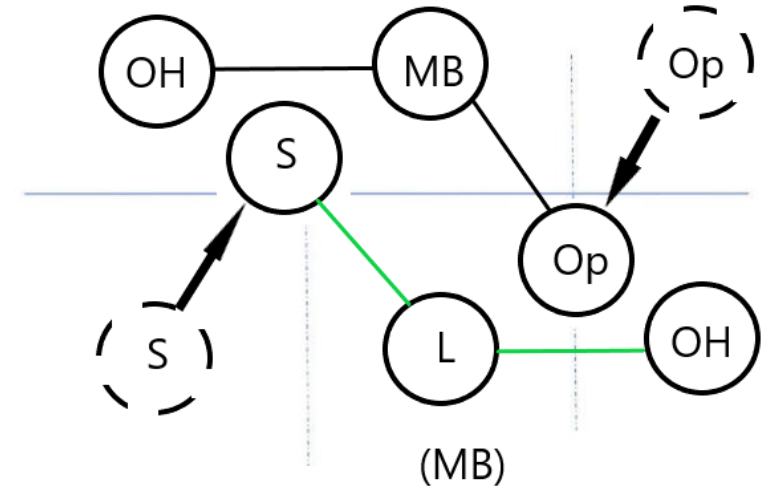
Alignment

If they are not in the same column or row, then overlap doesn't apply.



Alignment

Even though the LB hitter is closer to the net than the RF hitter, there is no overlap, since they are not in the same row or column.

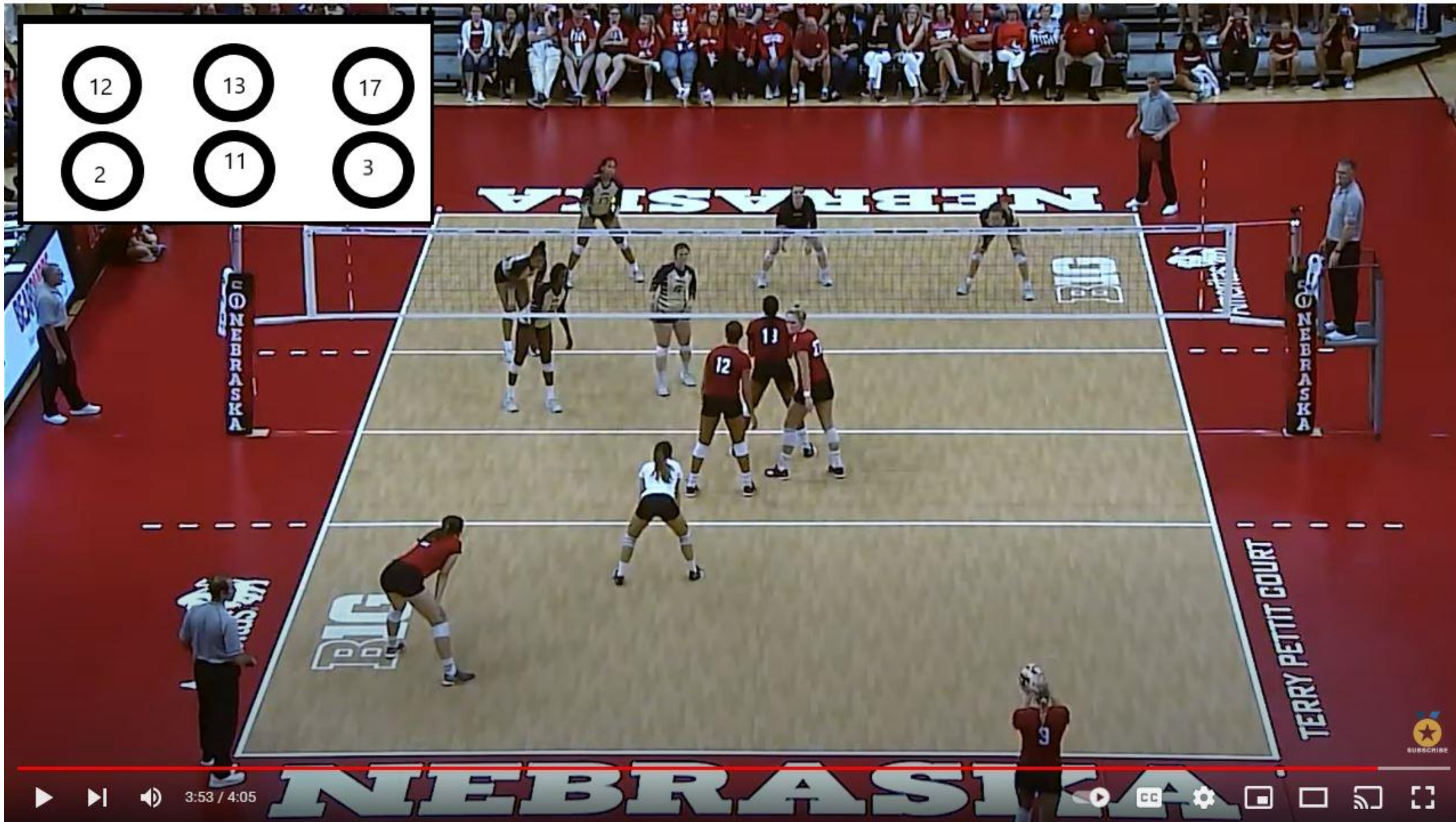


6-2 with Subs

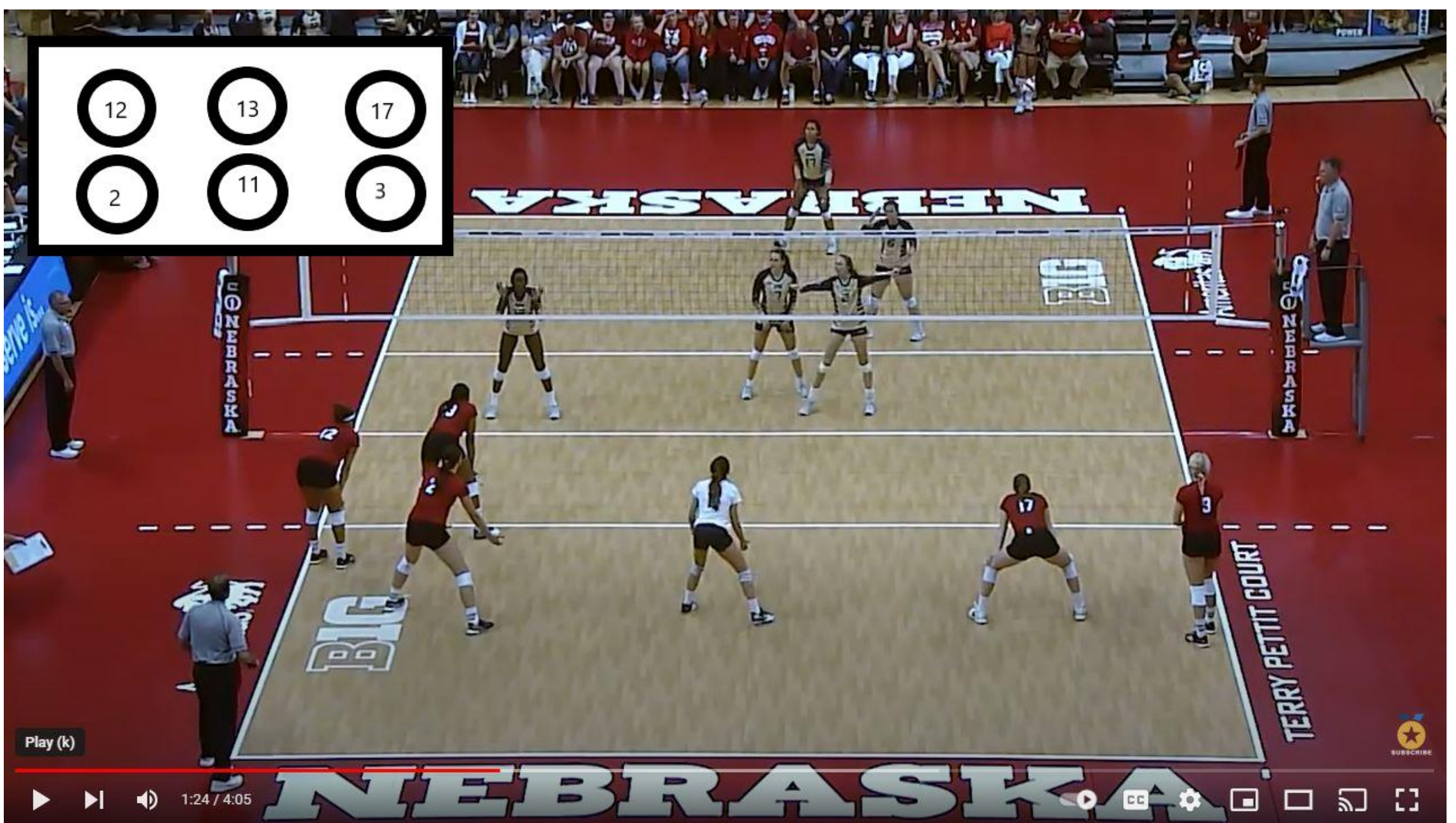
Volleyball Offense

https://youtu.be/FSwZ1g76_FE

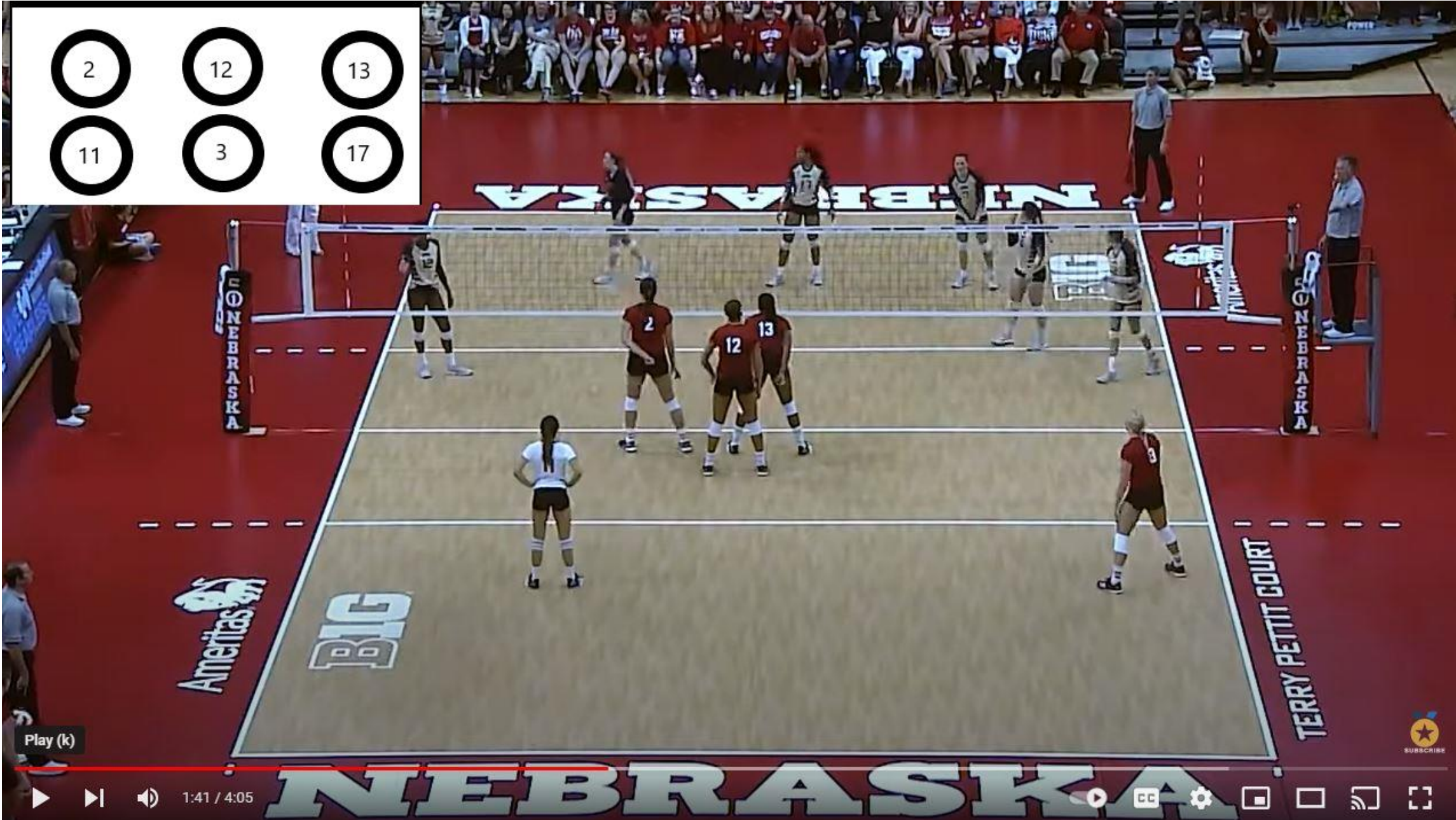
(Thanks to Skip for finding this)



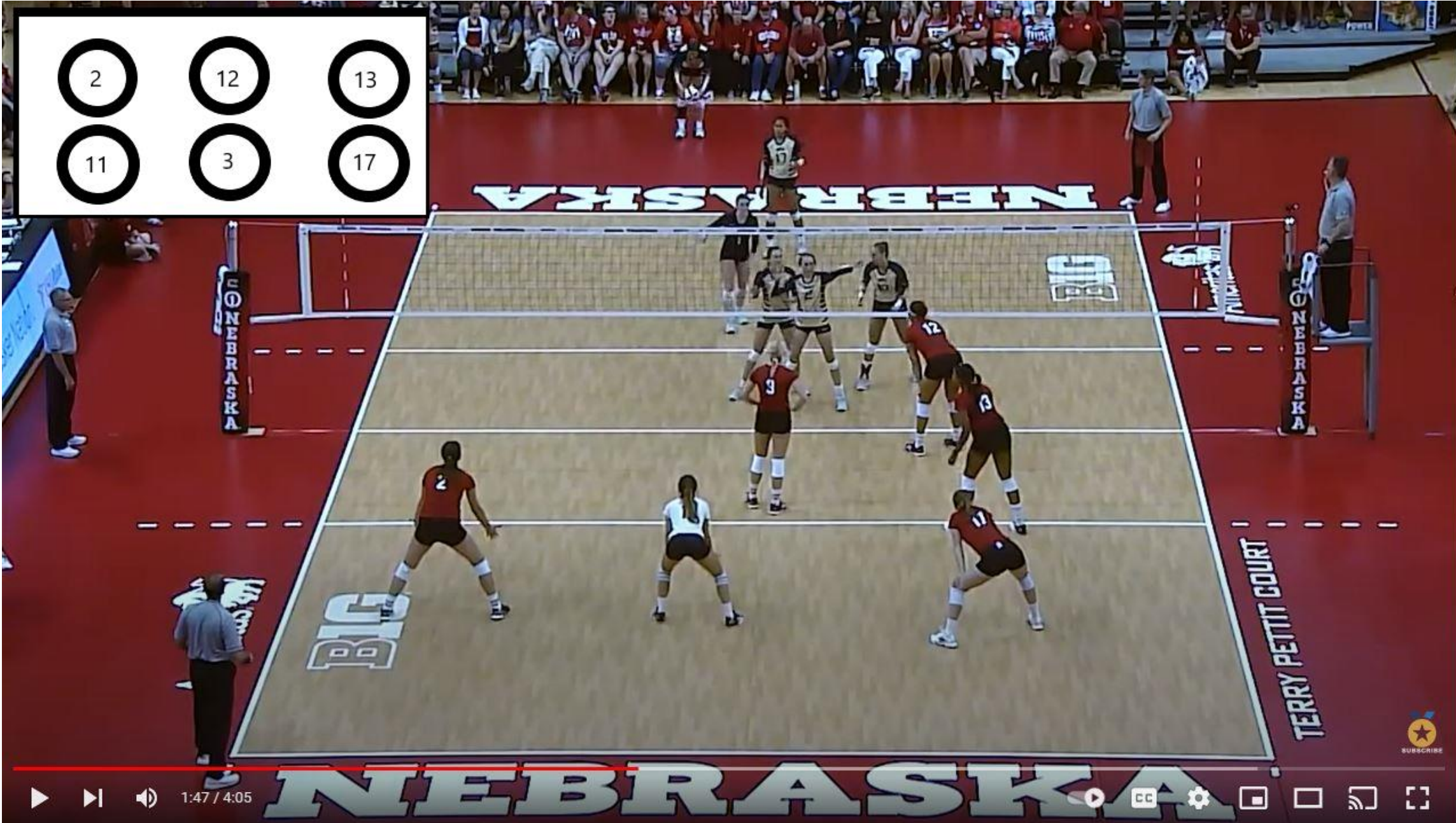
Rotation 1 - Serve



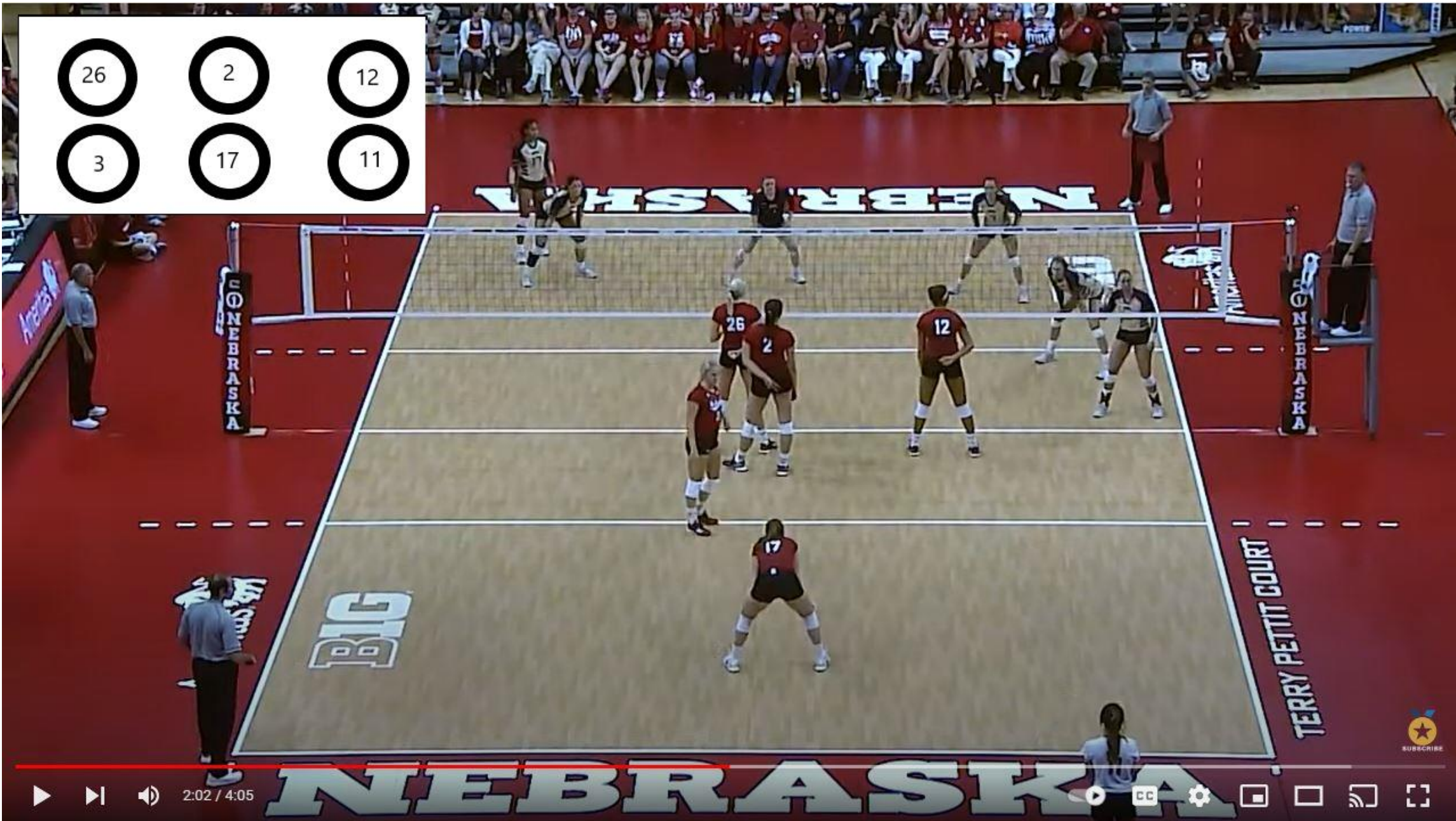
Rotation 1 - Receive



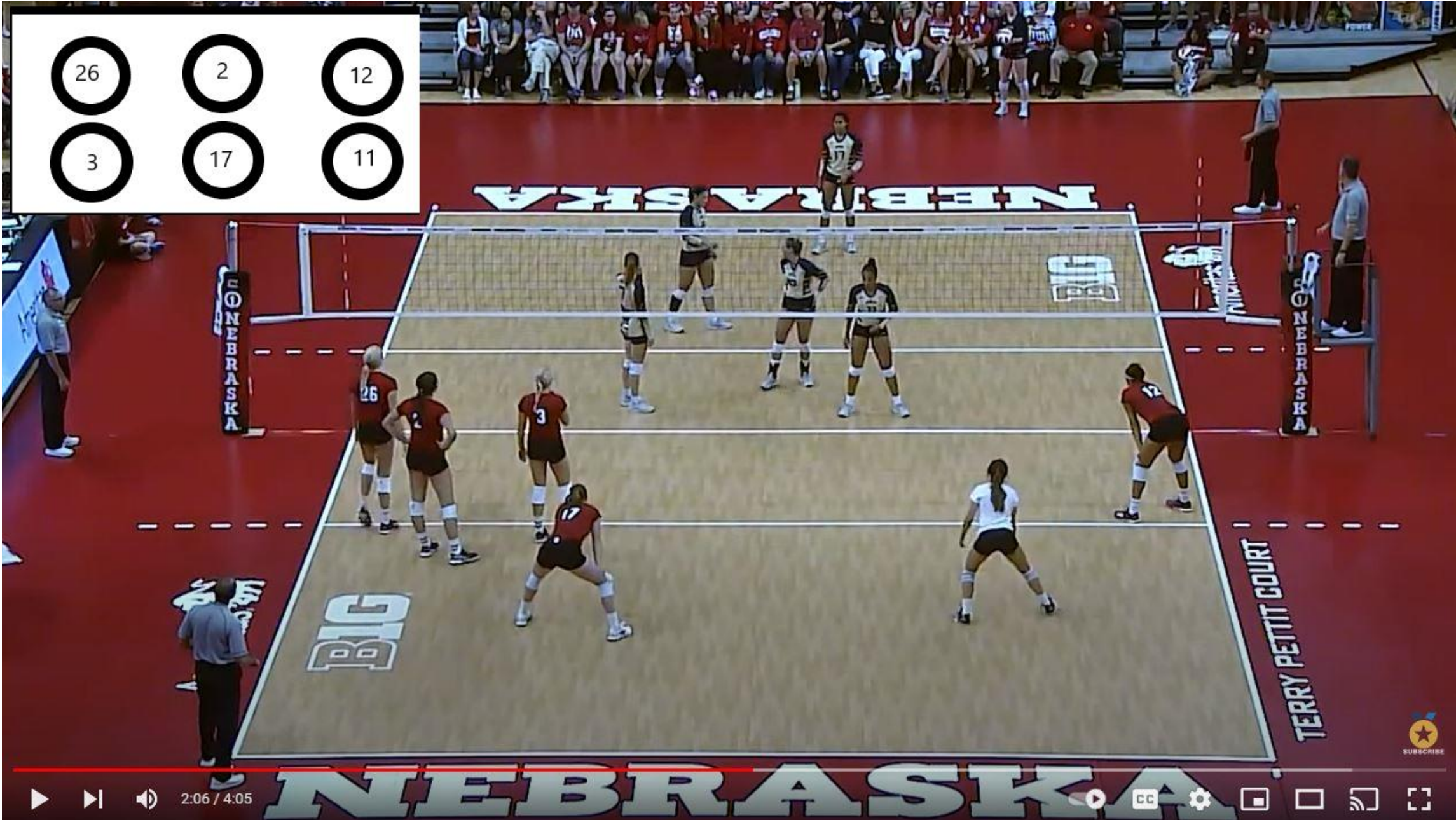
Rotation 2 - Serve



Rotation 2 - Receive



Rotation 3 - Serve



Rotation 3 - Receive

At the moment of serve

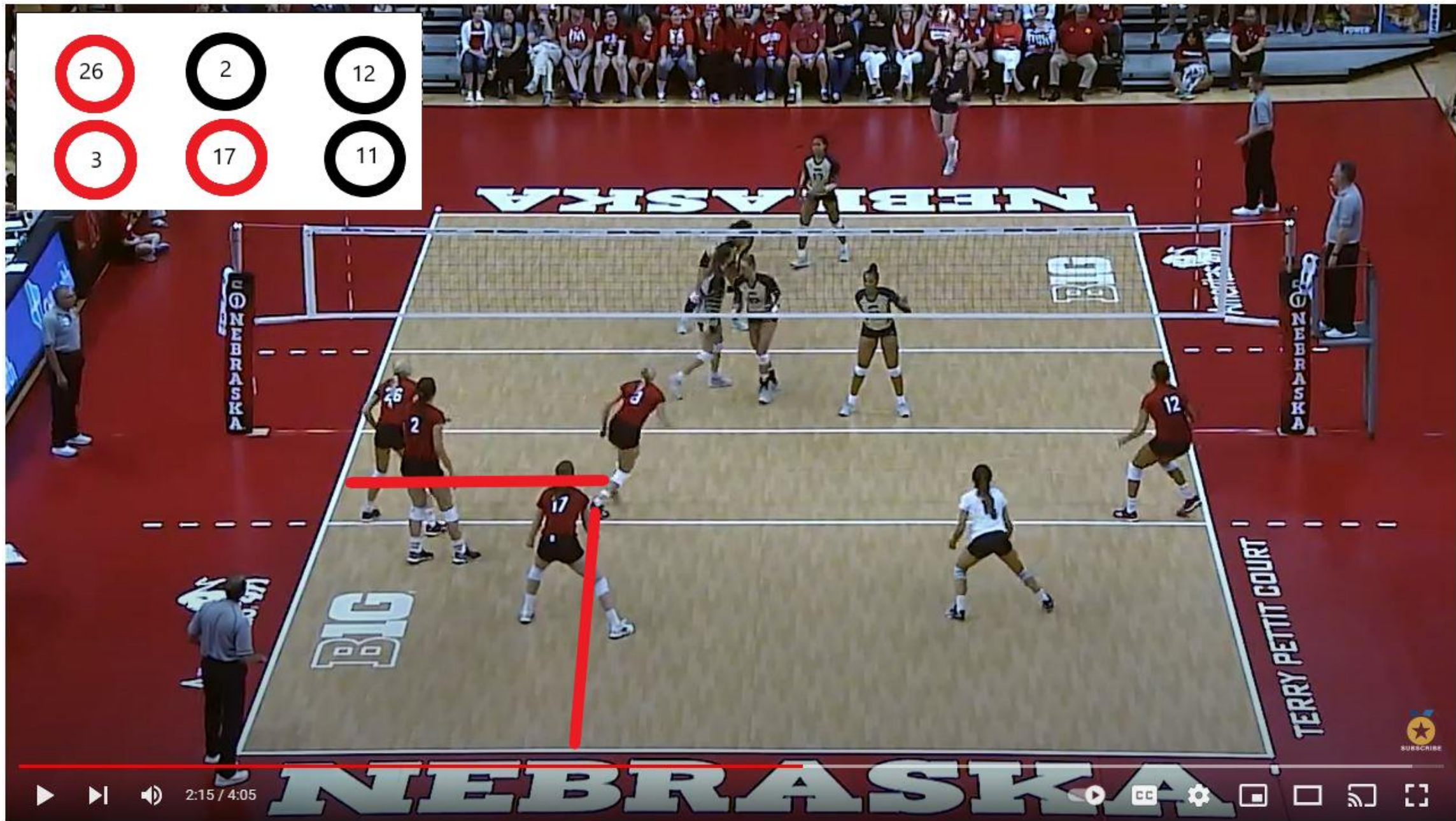
Front – Back

The back row player may not start closer to the net than their corresponding front row player.

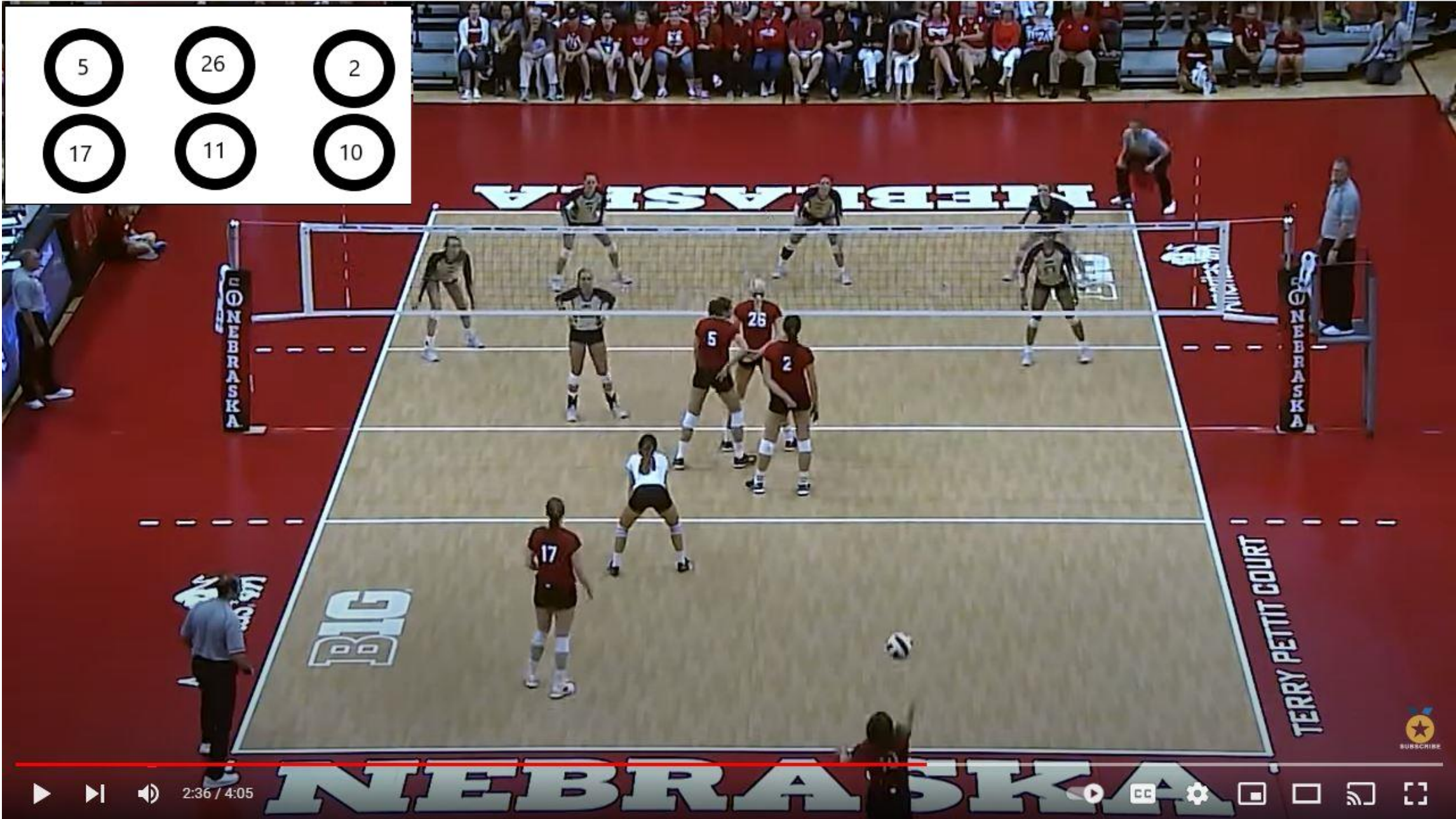
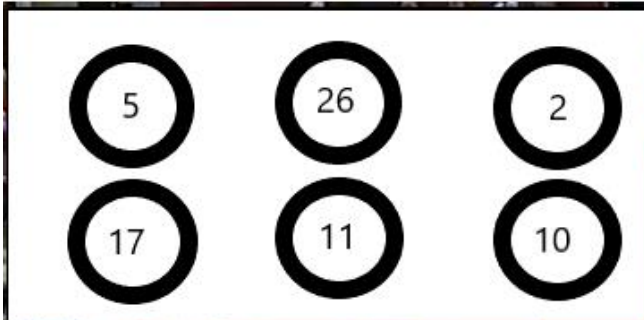
Side – Side

Middle player cannot be closer to the side than the corresponding side player.

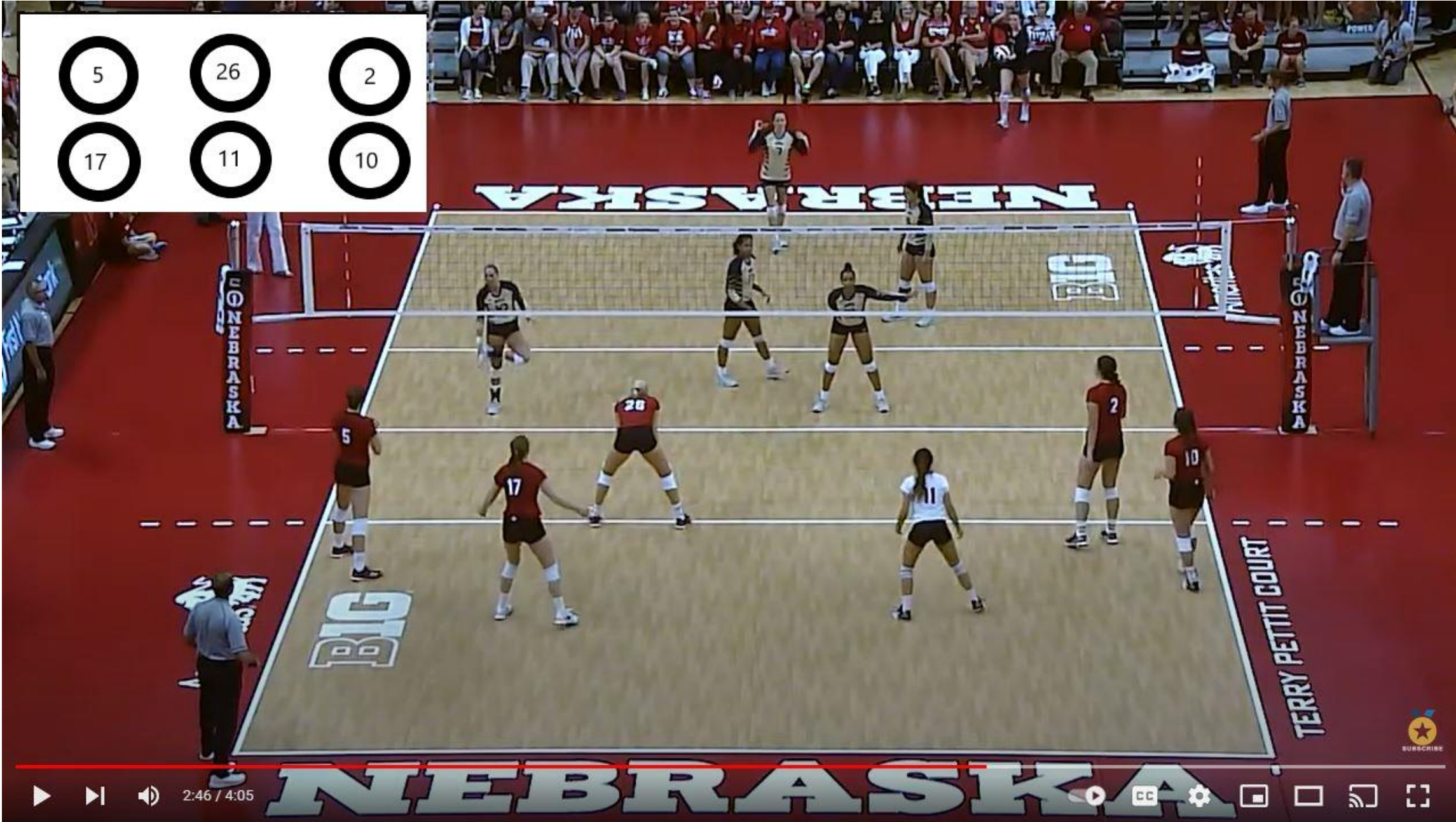
So...when the ball is served



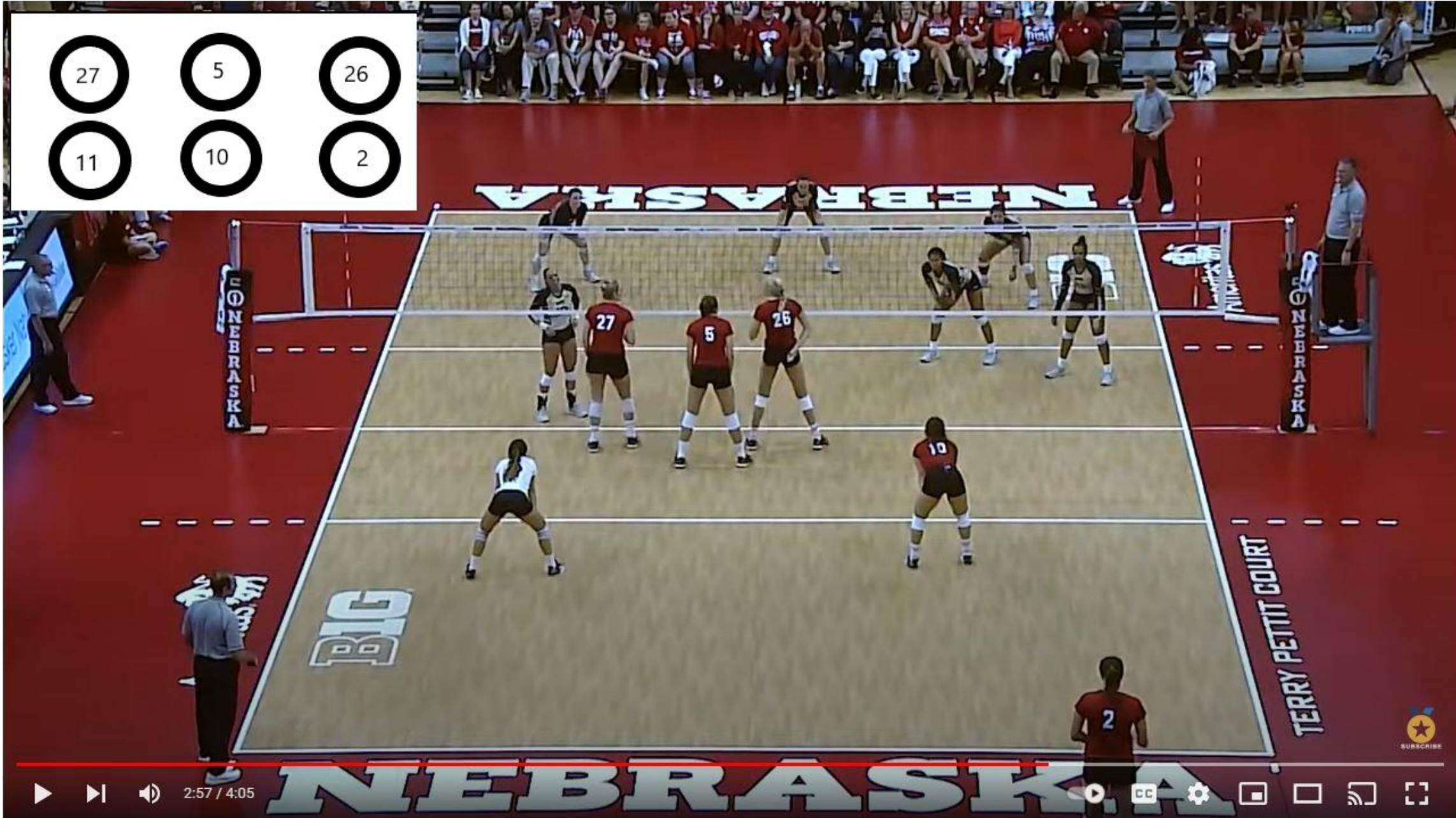
Rotation 3 – Receive – At Moment of Serve



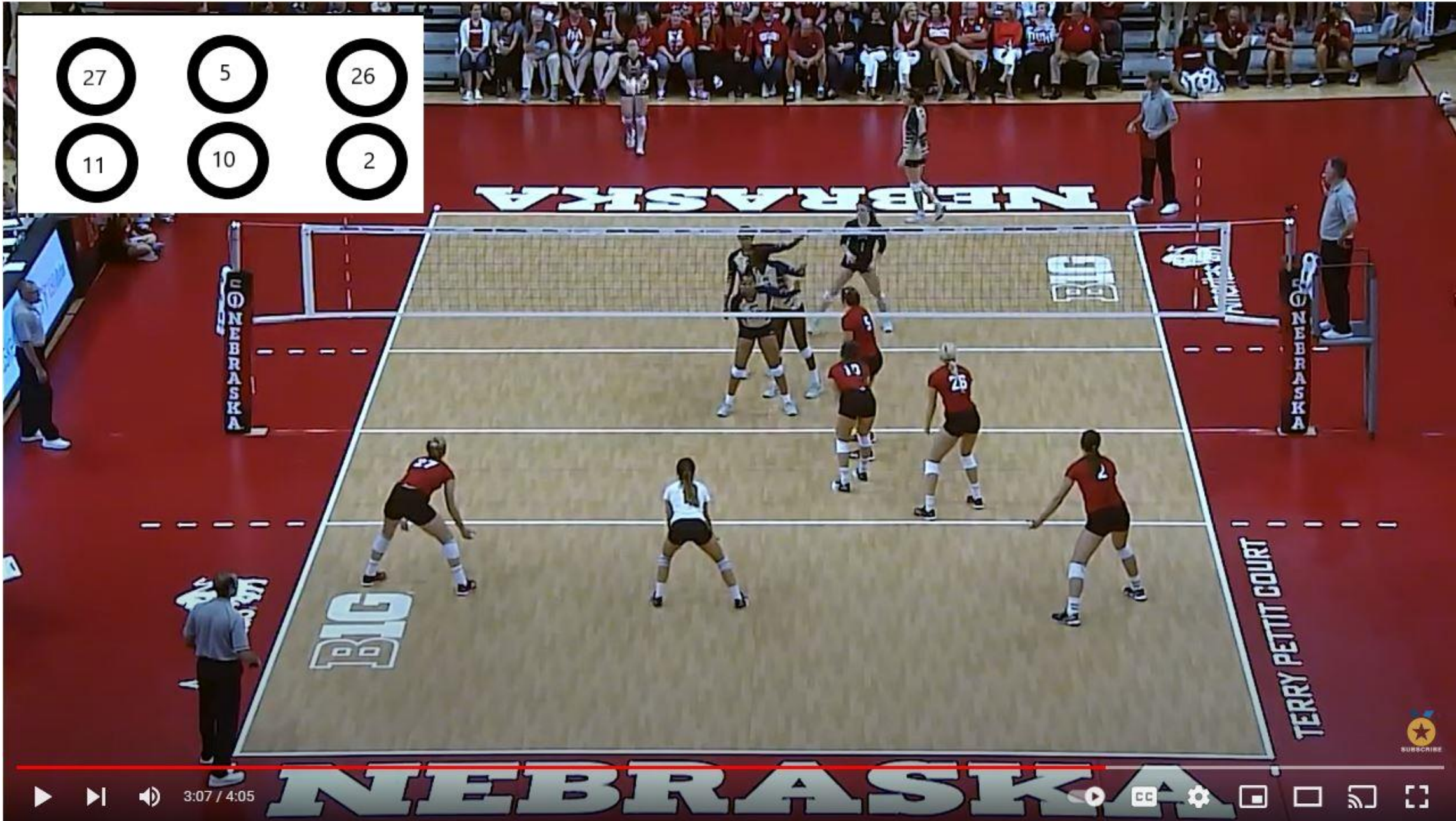
Rotation 4 - Serve



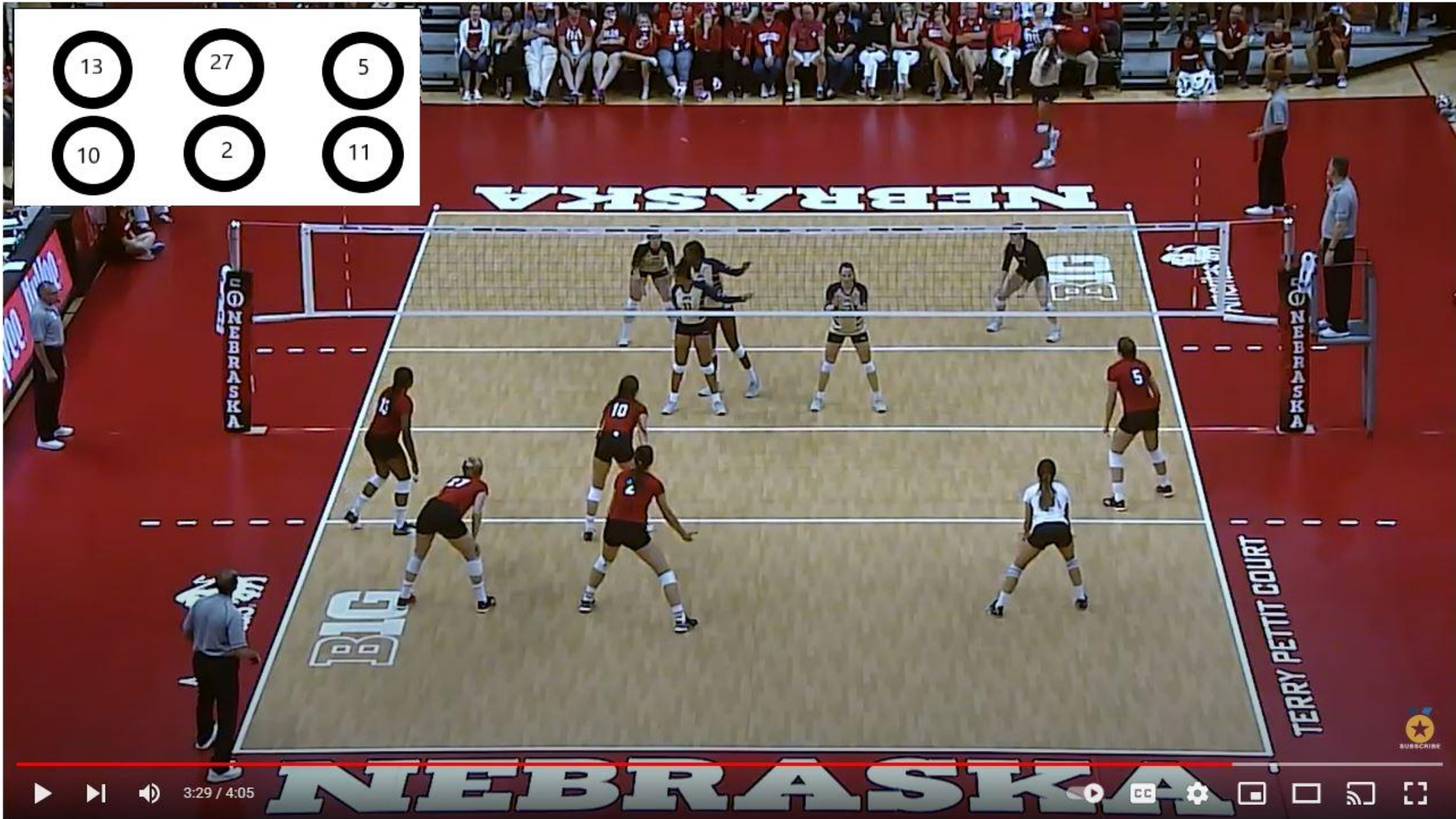
Rotation 4 - Receive



Rotation 5 - Serve



Rotation 5 - Receive



Rotation 6 - Receive

Alignment

We'll skip over this next section without player pictures, but it is good information for your review later!

Alignment – Rotation 1

Rotation One

3

2

1

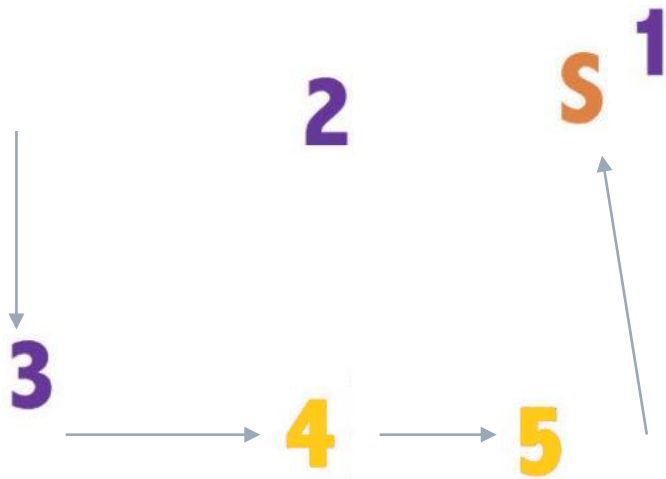
4

5

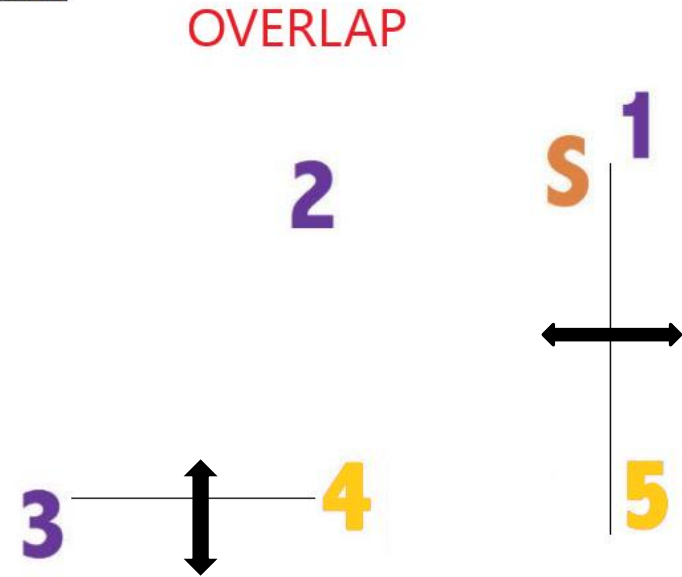
S

Alignment – Rotation 1

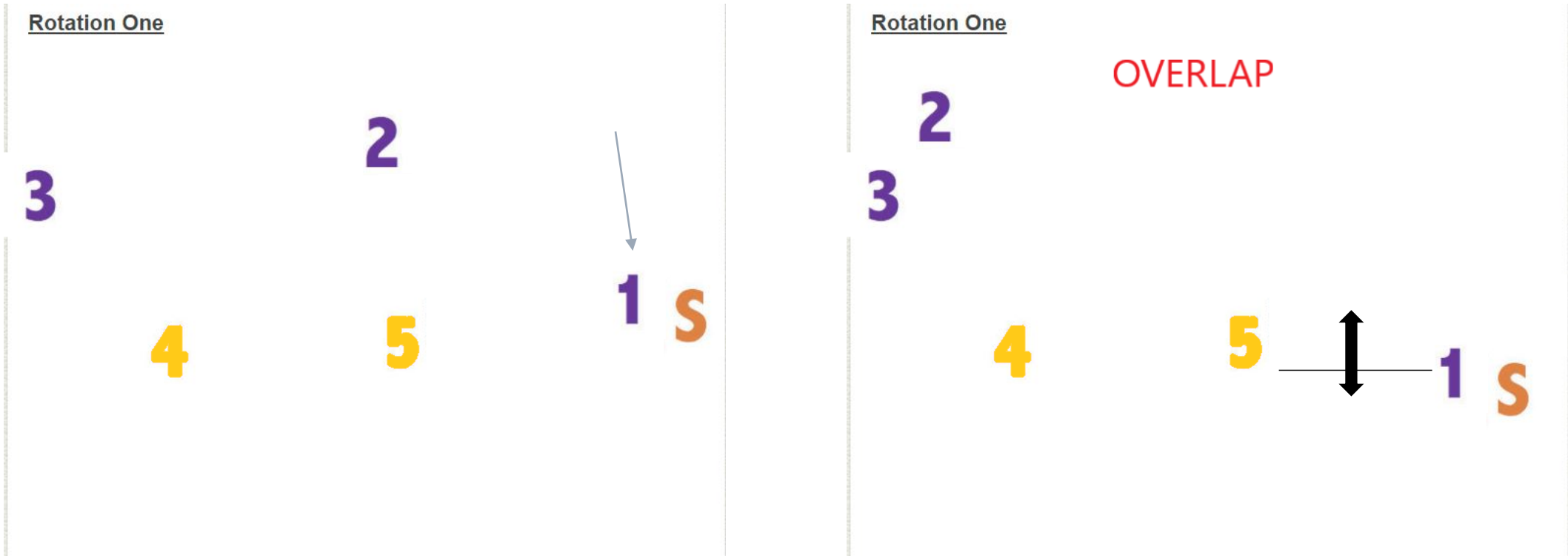
Rotation One



Rotation One



Alignment – Rotation 1



Alignment – Rotation 2

Rotation Two

4

3

2

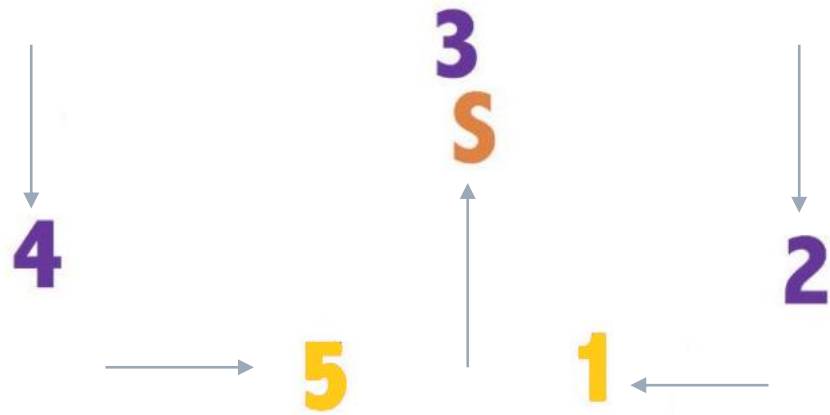
5

S

1

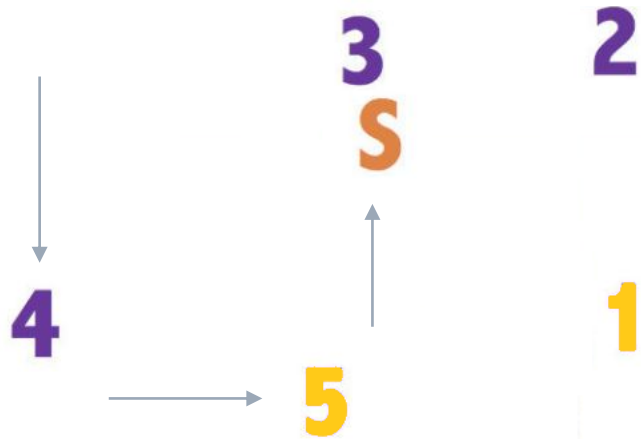
Alignment – Rotation 2

Rotation Two



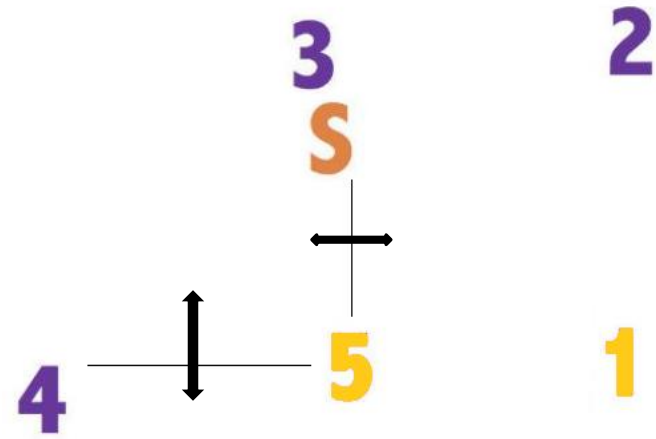
Alignment – Rotation 2

Rotation Two



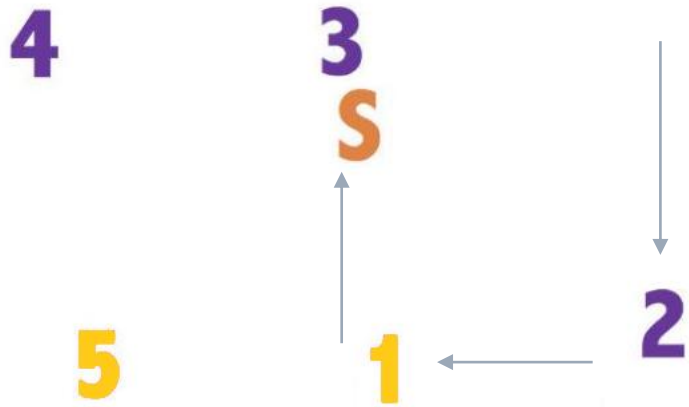
Rotation Two

OVERLAP



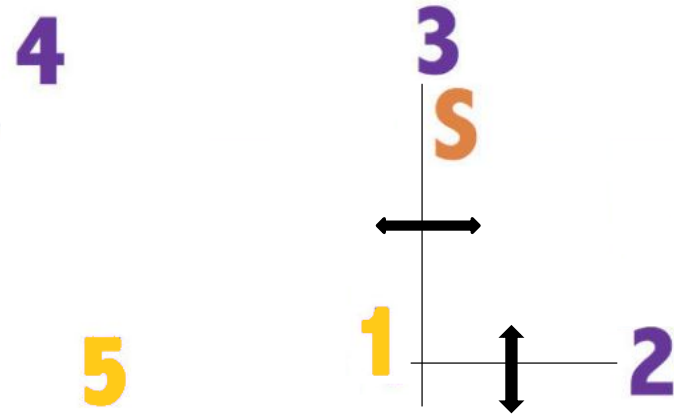
Alignment – Rotation 2

Rotation Two



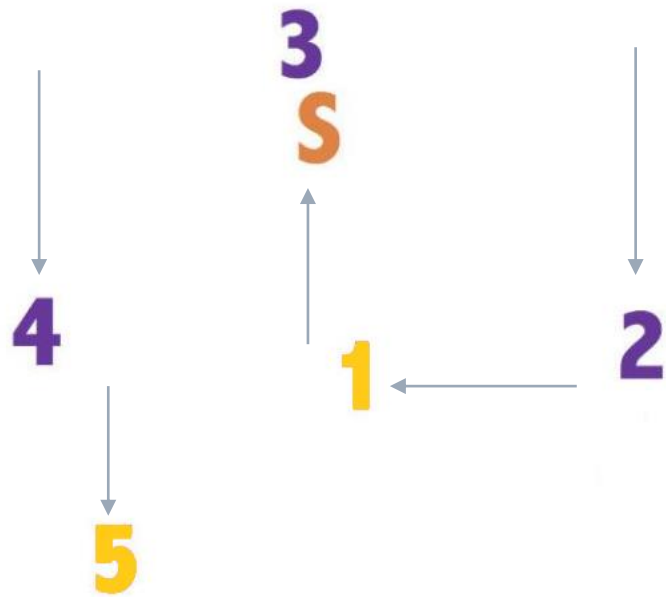
Rotation Two

OVERLAP

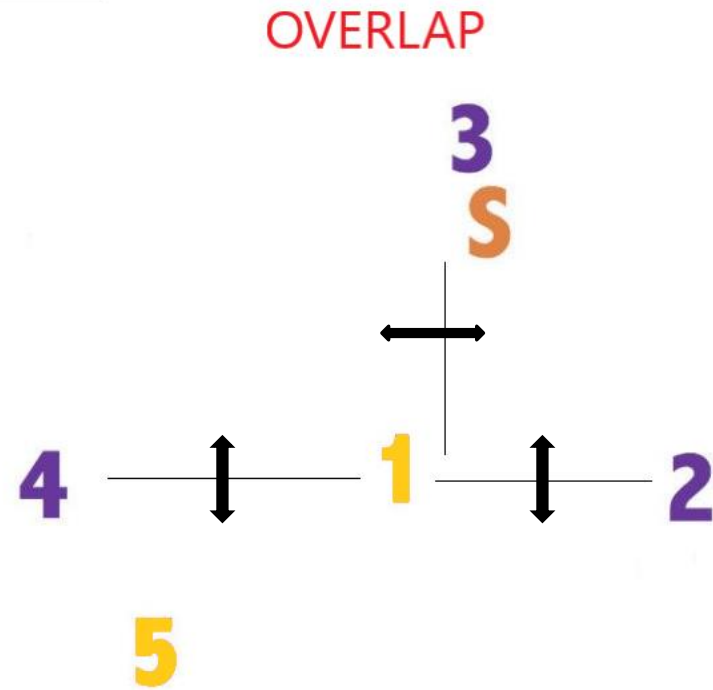


Alignment – Rotation 2

Rotation Two



Rotation Two



Alignment – Rotation 3

Rotation Three

5

4

3

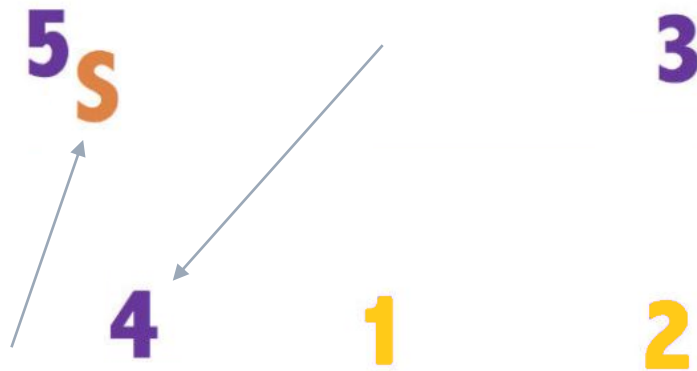
S

1

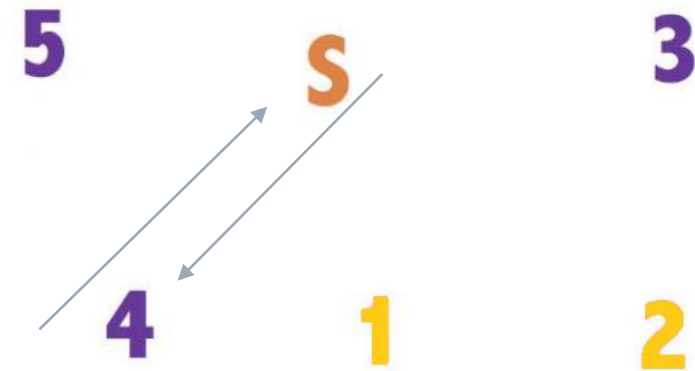
2

Legal Alignment (Row 3)

Rotation Three



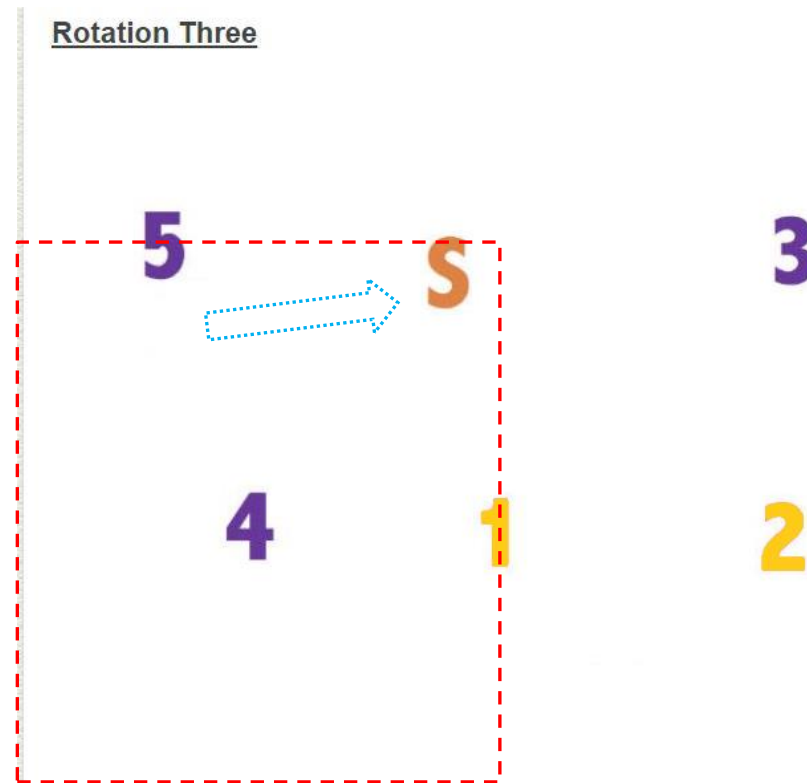
Rotation Three



Legal Alignment (Row 3)

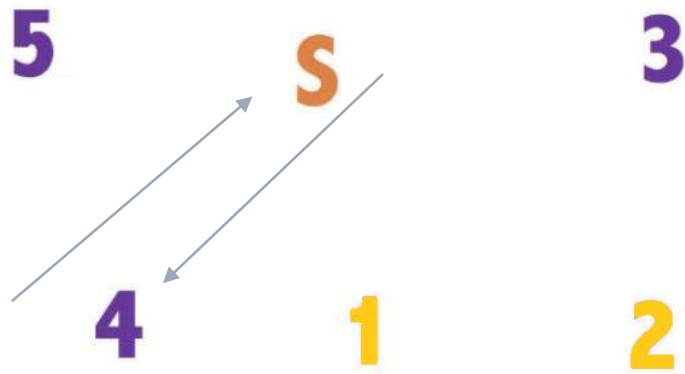
The setter can be anywhere in the box at the moment of serve.

Don't be fooled if they cross the middle front (4) prior to serve contact.



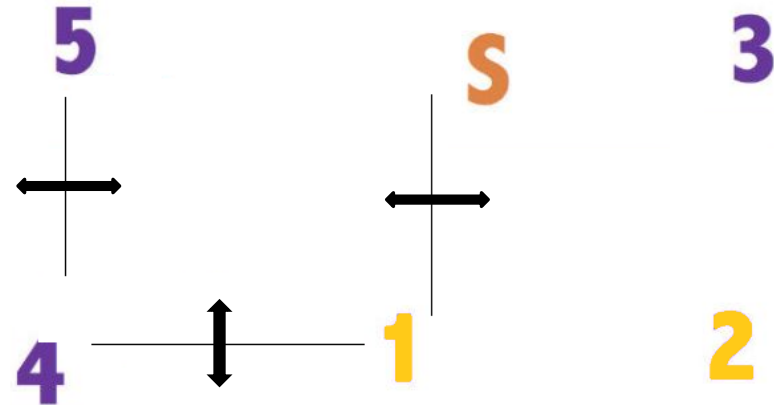
Alignment – Rotation 3

Rotation Three



Rotation Three

OVERLAP



Alignment – Rotation 4

Rotation Four

S

5

4

1

2

3

Alignment – Rotation 4

Rotation Four

S
5
4

1

2

3

Rotation Four

S
5

4

L

3

1

Rotation 4

Alignment – Rotation 4

Rotation Four

S
5

4

1

2

3

Rotation Four

S
5

4

1

L

3

Rotation 4

Alignment – Rotation 4

Rotation Four

S
5

1

2

4

3

Rotation Four

S
5

4

L

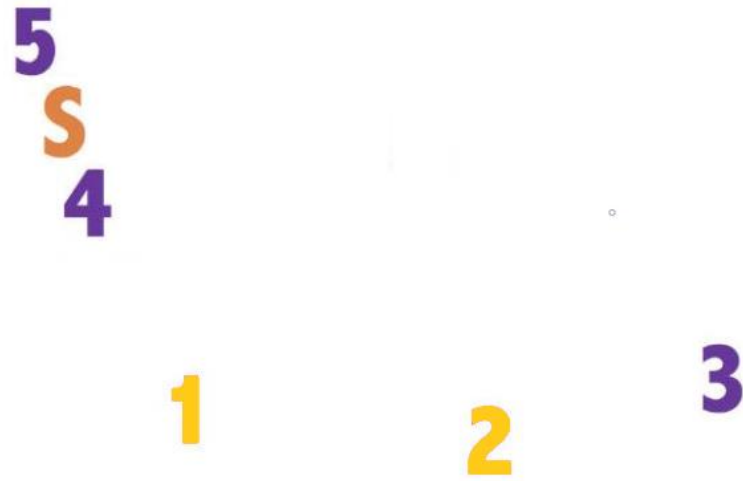
3

1

Rotation 4

Rotation Three vs. Rotation Four

Rotation Three

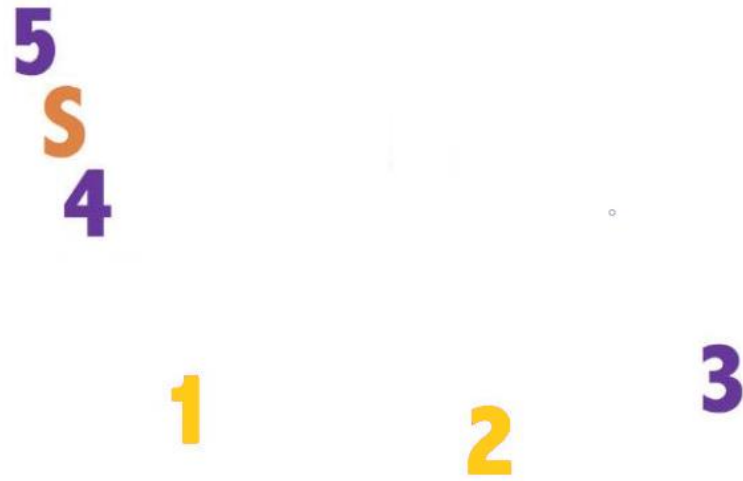


Rotation Four



Rotation Three vs. Rotation Four

Rotation Three



Rotation Four



Alignment – Rotation 5

Rotation Five

1

S

5

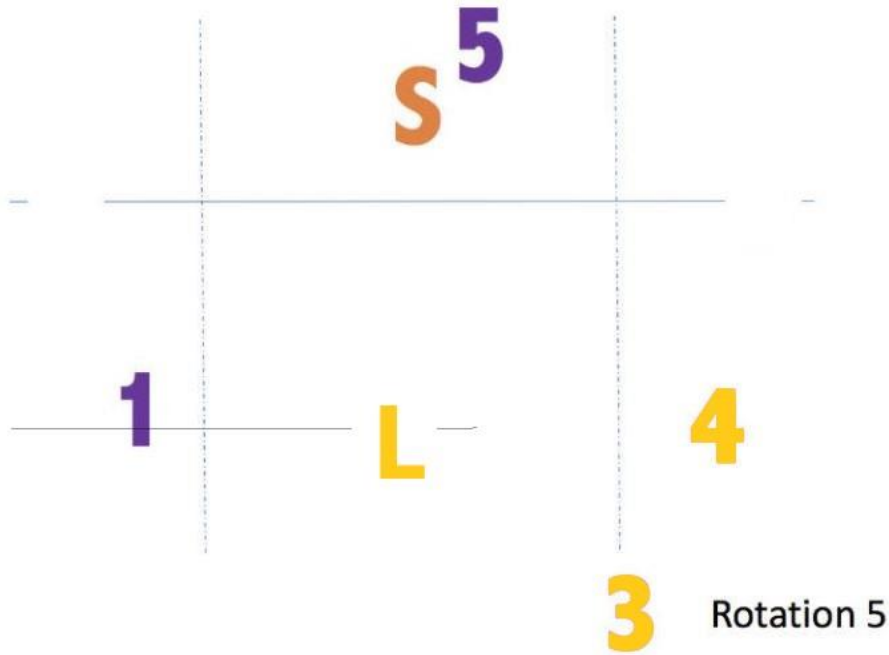
2

3

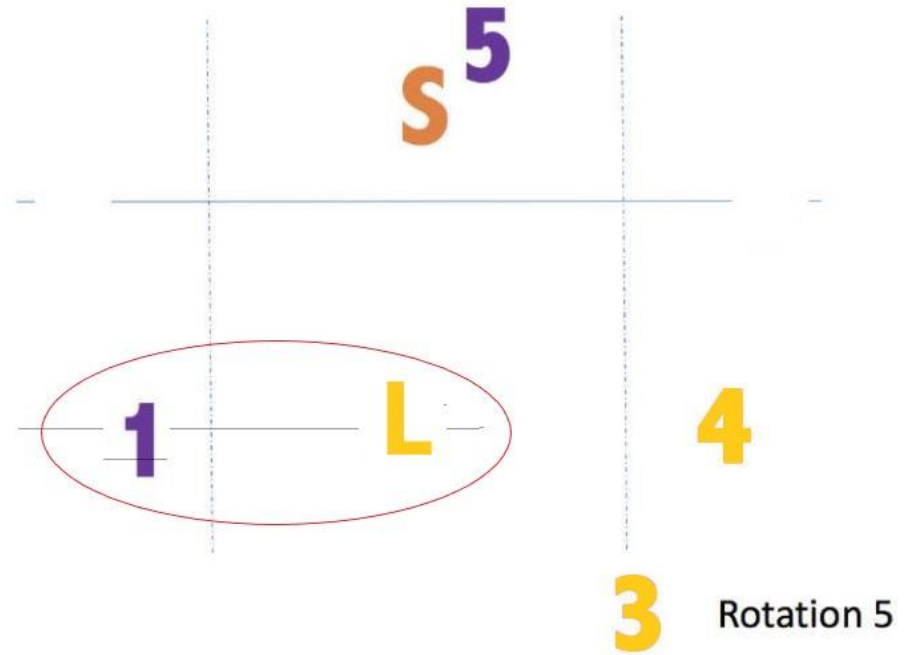
4

Alignment – Rotation 5

Rotation Five



Rotation Five



Alignment – Rotation 6

Rotation Six

2

1

S

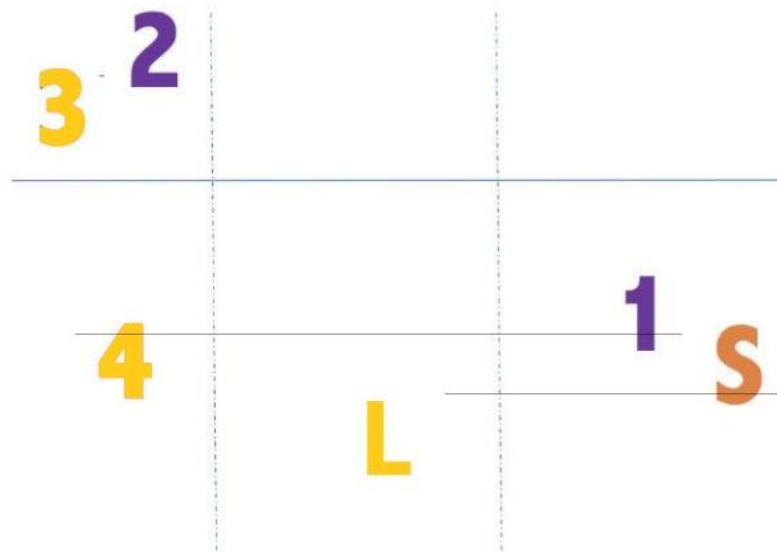
3

4

5

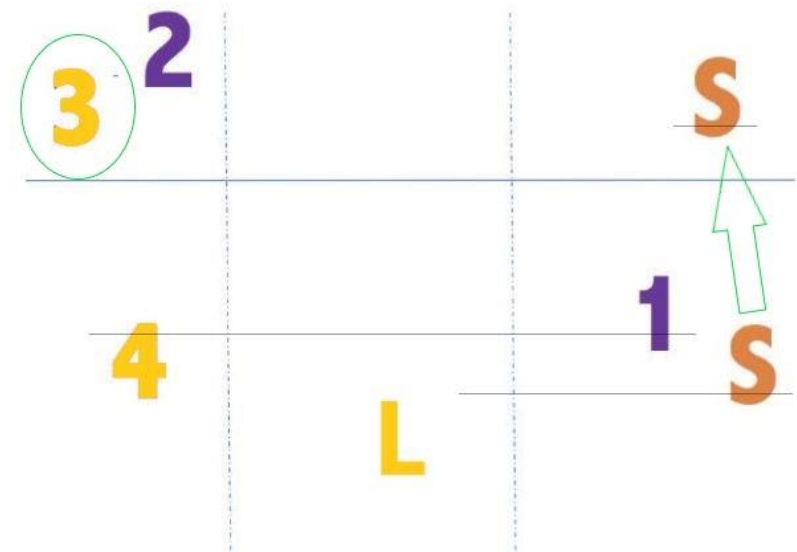
Legal Alignment (Row 6)

Rotation Six



Rotation 6

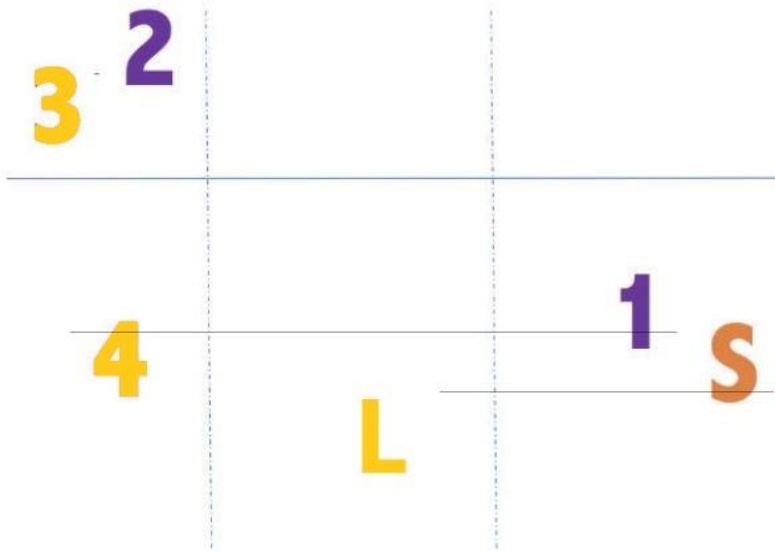
Rotation Six



Rotation 6

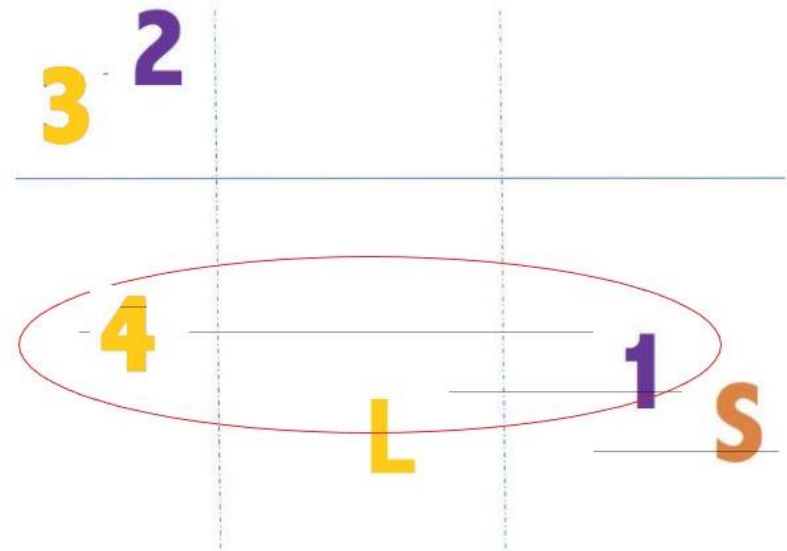
Alignment – Rotation 6

Rotation Six



Rotation 6







Rotation Six



Rotation 6



Recording Comments

V																	15	35	15	35	V					
																	16	36	16	36						
VI																	17	37	17	37	VI					
																	18	38	18	38						
																19	39	19	39							
																20	40	20	40							
																TIME-OUT										
SUBSTITUTIONS																				SUBSTITUTIONS						
1 2 3 4 5 6 7 8 9 10 11 12 13 14 15 16 17 18																				1 2 3 4 5						
COMMENTS:																SCORING KEYS: Serve  Served Point   Rotate   Libero Served  Re-Serve RS S-Subs Sx - Subs Sx										
																Set	1	2	3	4	5	POINTS	FIRST REFEREE:			
WINNING TEAM																				SECOND REFEREE:						
LOSING TEAM																				SCOREKEEPER:						

Recording Comments

Rule book p 56-57

Abbreviations:

YUD – Yellow Unnecessary Delay

RUD – Red Unnecessary Delay

YC – Yellow (Unsporting) Conduct

RC – Red (Unsporting) Conduct

DQ – Disqualification

CM – Concussion Management

RL – Re-designated Libero

ES – Exceptional Substitution

Recording Comments

Team, Comment, Score, (Optional – description)

Offending/Affected team's score is listed first.

Recording Comments

Valley Christian YUD (0-0)

Administrative yellow card was issued to a coach, team, or player for unnecessary delay when score was 0-0.

Optional: Valley Christian YUD (0-0) Lineup late.

Recording Comments

Valley Christian RUD #12 (18-20)

A subsequent administrative delay penalty was issued in the same set to player #12 when the score was 18-20.

Optional : Valley Christian RUD #12 (18-20) Jewelry on Sub.

Recording Comments

RSJ YC #11 (17-18)

A yellow warning card for a minor unsporting conduct was given to Rancho San Juan player #11 when the score was 17-18.

Optional: RSJ YC #11 (17-18) Arguing judgement call

Recording Comments

N. County RC HC (8-17)

A red unsporting conduct card was given to N. County Head Coach when the score was 8-17.

Optional: N. County RC HC (8-17) Threw Clipboard.

Recording Comments

Hollister DQ # 11 (29-29)

Hollister #11 was disqualified then the score was 29-29.

Optional: Hollister DQ # 11 Libero (29-29) Hand gesture.

Recording Comments

Short and Simple, let's get back to play.



Dealing with Injuries



Dealing with Injuries

Rule book p 49

11-4-1 In the case of an injury/illness during a set, a referee may interrupt play and call a referee's time-out. If the injured/ill player cannot continue play within 30 seconds, the head coach shall:

- A. Request a substitution for the injured/ill player;
- B. Complete a legal libero replacement for the injured/ill player, or;
- C. Take a team time-out if the team has not used its allotted time-outs.

The set resumes with a replay.

Dealing with Injuries

11-4-1 cont.

Notes:

1. If the decision is made to substitute for the injured player, the team shall be allowed the necessary time to safely move the player from the court.
2. If a coach does not make a decision within 30 seconds, an unnecessary delay (administrative yellow or red card) is charged.

Dealing with Injuries

Let's break this down a little further.

Dealing with Injuries

Let's break this down a little further.

We are NOT rushing this 30 seconds!

Dealing with Injuries

Let's break this down a little further.

We are NOT rushing this 30 seconds!

It will not start until the coach / medical staff has had time to reach and begin to evaluate the player.

Dealing with Injuries

Let's break this down a little further.

We are NOT rushing this 30 seconds!

It will not start until the coach / medical staff has had time to reach and begin to evaluate the player.

Then the R2 can slowly walk to the table and have them begin a 30 second timer. This is on a watch or phone, not on the scoreboard!

Dealing with Injuries

Let's break this down a little further.

If the head coach is dealing with the player, we can let an assistant coach know the options.

Eventually our “30 seconds” will expire, and we will need a decision from the coach.

What were those choices again?

Dealing with Injuries

- Request a substitution for the injured/ill player;
- Complete a legal libero replacement for the injured/ill player, or;
- Take a team time-out if the team has not used its allotted time-outs.

Dealing with Injuries

If the coach elects to substitute for the player:

Allow the team the necessary time to safely move the injured player from the court.

If there will be a delay, the officials may send the teams to their benches/warm-up areas.

Dealing with Injuries

If the coach elects to substitute for the player:

The substitute shall report to the substitution zone, and be beckoned to enter, but the injured player does not participate in the substitution process.

If the coach elects to replace (with a libero) the player:

The libero shall enter the court. Eventually we will have to substitute for the injured player once the libero rotates to the front row. Treat as above.

Dealing with Injuries

If the team elects to use its time-out(s), then we will whistle and indicate the time-out, and the time-out time will be kept on the scoreboard as normal.

If the team still has 2 time-outs remaining, they may have successive time-outs.

Exceptional Substitution

10-3-6 When teams have exhausted their 18 team substitutions or when no legal substitutes are available, an exceptional substitution is permitted only for an injured/ill player in the following priority:

Exceptional Substitution

10-3-6 When teams have exhausted their 18 team substitutions or when no legal substitutes are available, an exceptional substitution is permitted only for an injured/ill player in the following priority:

1. By a teammate who has never played in the set or a player who has played in that position earlier in the set

Exceptional Substitution

10-3-6 When teams have exhausted their 18 team substitutions or when no legal substitutes are available, an exceptional substitution is permitted only for an injured/ill player in the following priority:

1. By a teammate who has never played in the set or a player who has played in that position earlier in the set.
2. By any legal non-libero teammate on the bench who is not currently being replaced by the libero, regardless of previous position played.

Exceptional Substitution

10-3-6 When teams have exhausted their 18 team substitutions or when no legal substitutes are available, an exceptional substitution is permitted only for an injured/ill player in the following priority:

2. By any legal non-libero teammate on the bench who is not currently being replaced by the libero, regardless of previous position played.
3. By a libero if no other possible substitute exists. When no longer playing as a libero, that player shall wear the same uniform as the teammates and the team continues play without a libero.

Exceptional Substitution

An exceptional sub is counted as one of the team's 18 substitutions if they have not exhausted their 18 substitutions.

Dealing with Injuries

11-4-2 In the case of a team having an injured/ill player who is unable to play at the end of an official's time-out regarding injury/illness and all other time-outs and no legal or exceptional substitute is available, the first referee may call a special injury time-out of up to three minutes for the injured/ill player to return.

If the player cannot return by the conclusion of the special injury timeout, the team shall play short for the remainder of the set....

Dealing with Injuries–Prior to Set

11-4-4 In case of injury or illness to a starting player prior to a set, the injured/ill player is replaced in the lineup without penalty and no entry is charged to the injured or ill player.

Dealing with Injuries–Returning

10-3-4 An injured/ill player who is legally replaced may re-enter the set.

10-3-6 Note: An injured/ill player replaced by an exceptional substitute may not re-enter the set in which the exceptional substitution takes place.

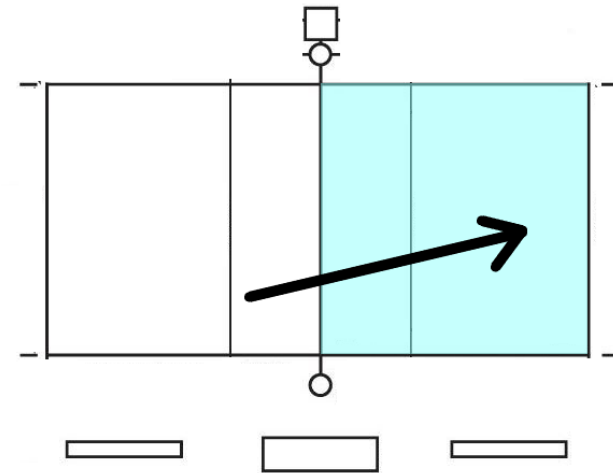


Signals



Signals

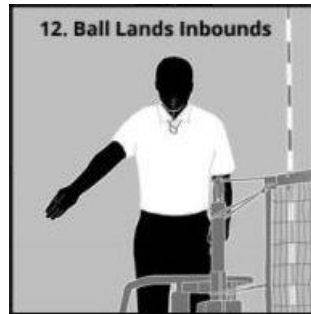
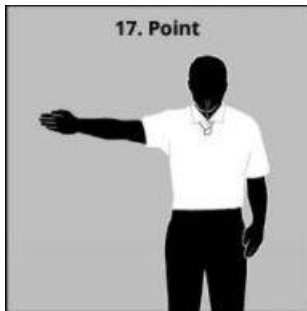
The attacker hits the ball onto the opposing side's court.



Signals

R1 / R2

Award point



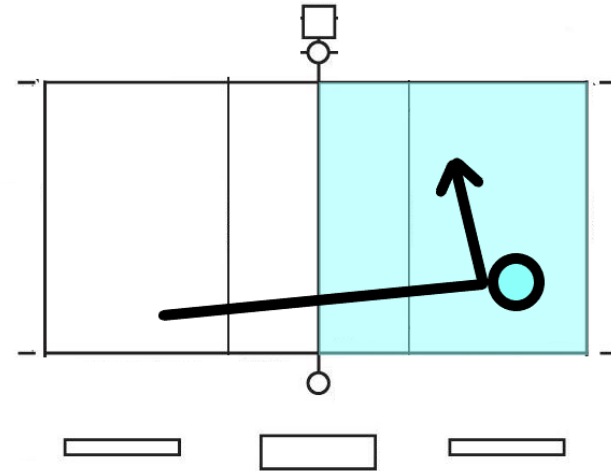
Line Judge



Signal In

Signals

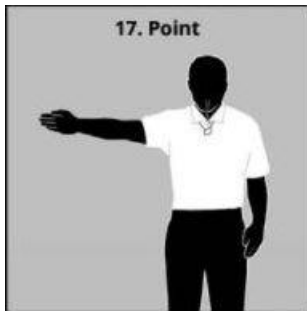
The passer tries to play the ball, but the ball lands in bounds on their side of the court.



Signals

R1 / R2

Award point



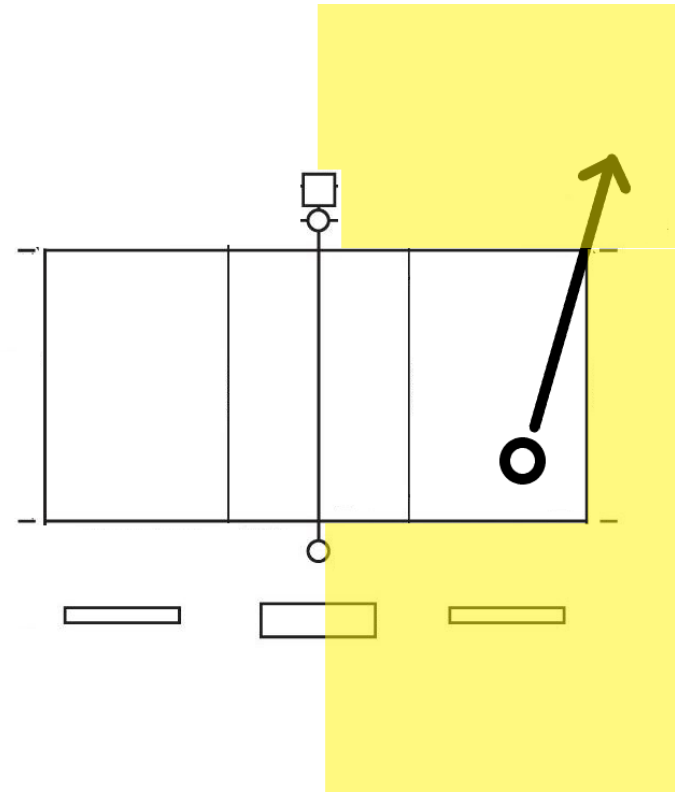
Line Judge



Signal In

Signals

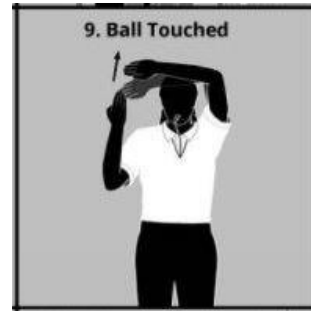
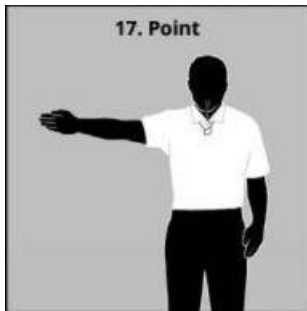
The passer tries to play the ball, but the ball lands out of bounds on their side of the court.



Signals

R1 / R2

Award point



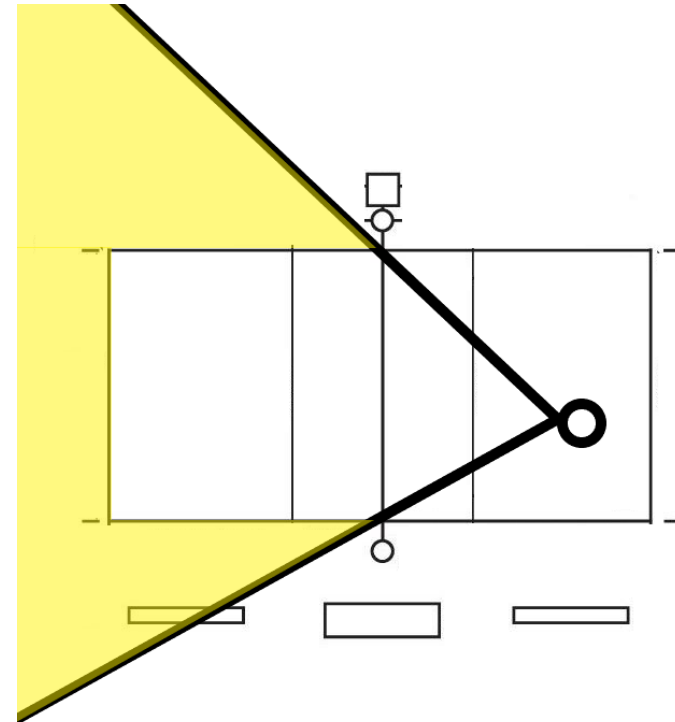
Line Judge



Signal Touch

Signals

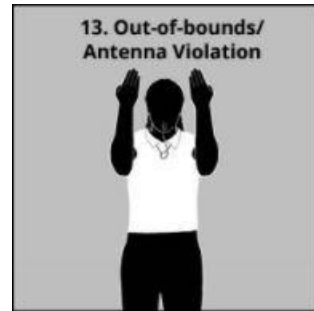
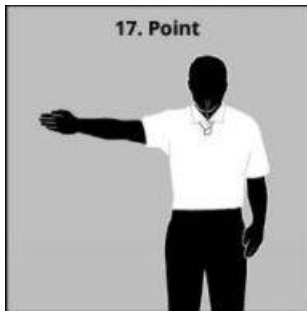
The ball passes inside the antenna, but lands out of bounds.



Signals

R1 / R2

Award point



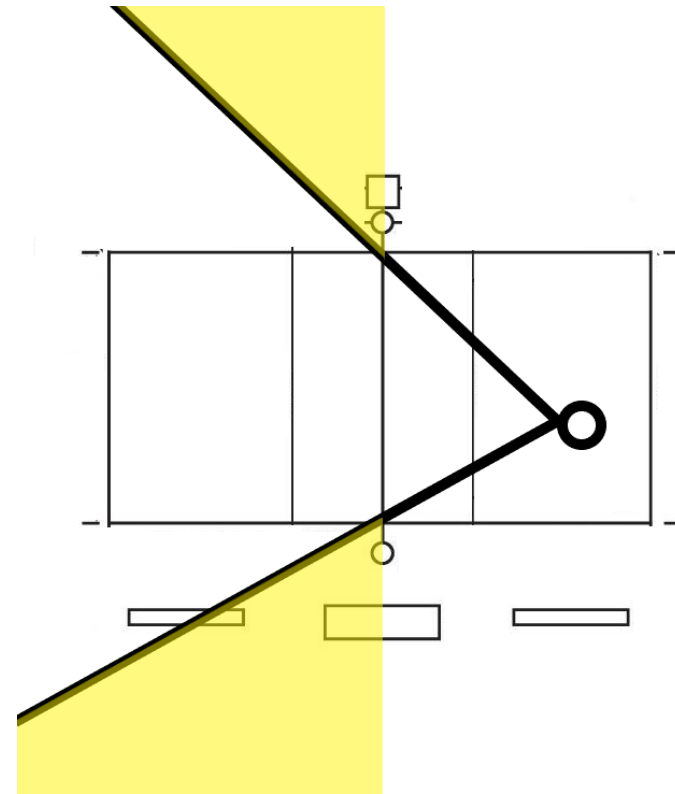
Line Judge



Signal Out

Signals

Ball passes outside the antenna and lands out of bounds on the other side of the court.

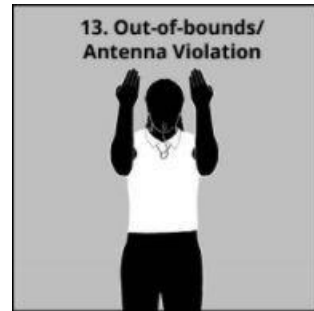
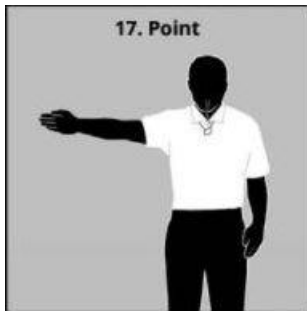


Signals – R1 Side

R1 / R2

Line Judge

Award point



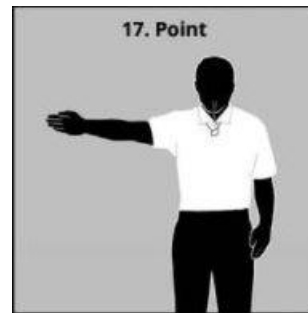
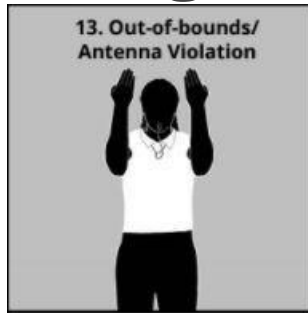
Signal In

Signals – R2 Side

R2 blows whistle

Line Judge

R2 signals out

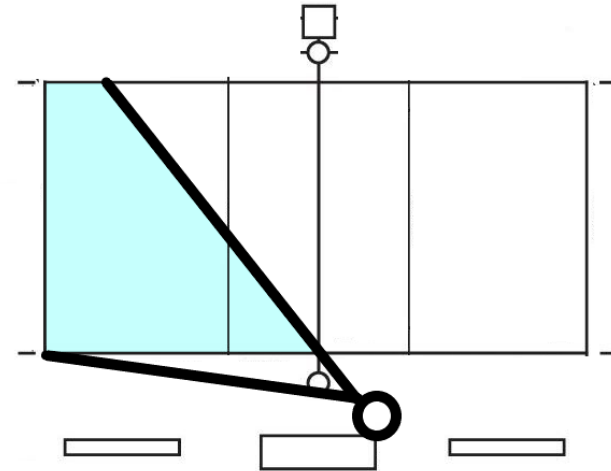


Both award point



Signals

Ball is hit outside the antenna, but lands in the opponents court.



Signals

Same signals as when ball landed out when hit outside the antenna.

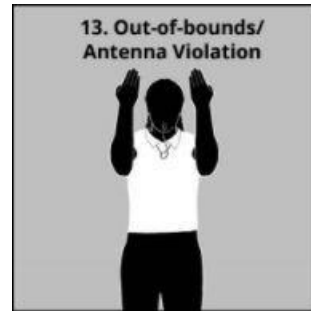
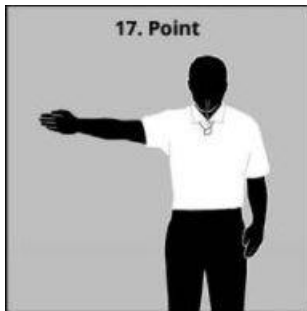
Depends if on R1 side or R2 side.

Signals – R1 Side

R1 / R2

Line Judge

Award point



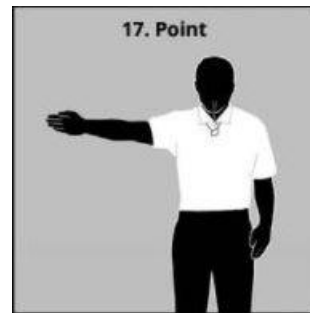
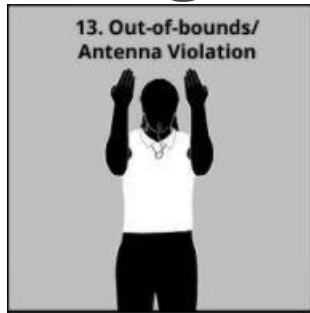
Signal In

Signals – R2 Side

R2 blows whistle

Line Judge

R2 signals out

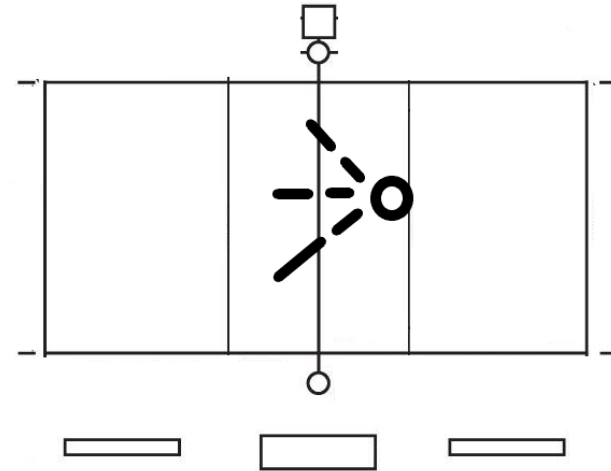


Both award point



Signals

Ball passes completely under the net.

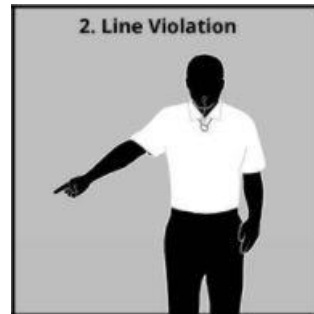
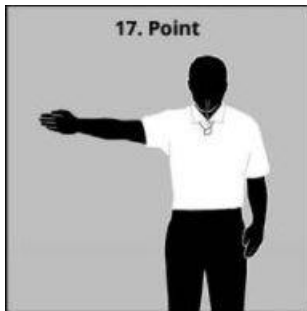


Signals

R1 / R2

Line Judge

Award Point



No Signal

Point to center line

Net Violation

R2 calls a net violation

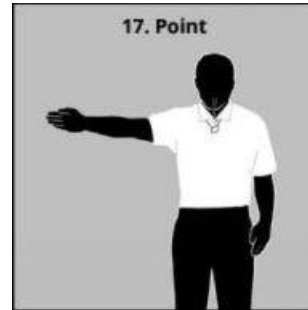


Signals

R2 blows whistle

Line Judge

R2 signals net, Indicates #



Both officials award point

No Signal

R1 repeats number

Center Line Violation

R2 calls a center line violation

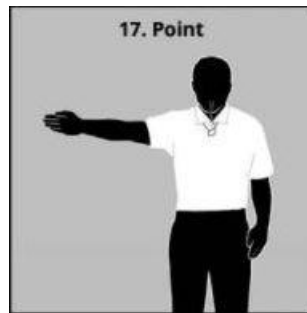


Signals

R2 blows whistle

Line Judge

R2 signals violation



Both award point

No Signal





Post Game



IT AIN'T OVER UNTIL THE PAPERWORK IS DONE

Post Game Report on Arbiter

R1 completes the report

Report final match score

Note any significant game issues in comments section

				Time	Location	Gym		
9460		101441	REF 2	4/5/2022 Tue 5:00 PM	Volleyball, Boys Junior Varsity	Salinas High School, Gym	Salinas High School	Monterey High School
9819		101441	REF 1	4/5/2022 Tue 6:30 PM	Volleyball, Boys Varsity	Salinas High School, Gym	Salinas High School	Monterey High School
9398		101441	REF 2	4/7/2022 Thu 5:00 PM	Volleyball, Boys Junior Varsity	Alisal High School, Gym	Alisal High School	Soledad High School
9427		101441	REF 1	4/7/2022 Thu 6:30 PM	Volleyball, Boys Varsity	Alisal High School, Gym	Alisal High School	Soledad High School
11026		101441	REF 1	4/9/2022 Sat 8:00 AM	Volleyball, Varsity Tournament	Hollister-San Benito High School, Gym	TBA	TBA
9821		101441	REF 2	4/11/2022 Mon 5:00 PM	Volleyball, Boys Junior Varsity	Carmel High School, Gym	Carmel High School	Monterey High School
9826		101441	REF 1	4/11/2022 Mon 6:30 PM	Volleyball, Boys Varsity	Carmel High School, Gym	Carmel High School	Monterey High School
10992		101441	REF 2	4/13/2022 Wed 5:00 PM	Volleyball, Boys Varsity	Marina High School, Gym	Marina High School	Rancho San Juan High School
45942		BASO	R1	4/23/2022 Sat 8:00 AM	Mens VB, Varsity Tournament	Bellarmino College Prep, Gym	Bellarmino College Preparatory	TBA
45945		BASO	R1	4/23/2022 Sat 1:00 PM	Mens VB, Varsity Tournament	Bellarmino College Prep, Gym	Bellarmino College Preparatory	TBA
9535		101441	REF 1	4/25/2022 Mon 6:30 PM	Volleyball, Boys Varsity	Gilroy High School, Gym	Gilroy High School	Rancho San Juan High School
9472		101441	REF 2	4/26/2022 Tue 5:00 PM	Volleyball, Boys Junior Varsity	Carmel High School, Gym	Carmel High School	San Benito High School
9485		101441	REF 1	4/26/2022 Tue 6:30 PM	Volleyball, Boys Varsity	Carmel High School, Gym	Carmel High School	San Benito High School
9478		101441	REF 1	5/3/2022 Tue 5:00 PM	Volleyball, Boys Junior Varsity	Palma High School, Gym	Palma High School	Christopher High School
9479		101441	REF 1	5/3/2022 Tue 6:30 PM	Volleyball, Boys Varsity	Palma High School, Gym	Palma High School	Christopher High School
9472		101441	REF 1	5/4/2022 Wed 5:00 PM	Volleyball, Boys Junior Varsity	Seaside High School, Gym	Seaside High School	Watsonville High School
9473		101441	REF 2	5/4/2022 Wed 6:30 PM	Volleyball, Boys Varsity	Seaside High School, Gym	Seaside High School	Watsonville High School
11309		101441	REF 2	5/10/2022 Tue 7:00 PM	Volleyball, CCS (Playoffs Only)	Carmel High School, Gym	Carmel High School	TBA
46502		BASO	Lines	5/14/2022 Sat 11:30 AM	Mens VB, VARSITY-B	St. Francis High School-Mountain View, Gym	Monta Vista High School	Homestead High School
46501		BASO	R1	5/14/2022 Sat 2:00 PM	Mens VB, VARSITY-B	St. Francis High School-Mountain View, Gym	St. Francis High School-Mountain View	Mountain View High School-Mountain View
46514		BASO	R2	5/17/2022 Tue 6:00 PM	Mens VB, VARSITY-B	Mountain View High School-Mountain View, Gym	Mountain View High School-Mountain View	Campolindo High School
Event		101441		7/26/2022 Tue 6:30 PM	Volleyball Training Meeting One	Palma High School		
Event		101441		7/27/2022 Wed 6:30 PM	Football Meeting Two on Zoom	Your Laptop Computer or SmartPhone		

Post Game Report on Arbiter

Game Report (Game: 9412)

Save Exit

Game	Date	Time	Sport	Level	Site	Status	Notes
9412	5/4/2022 Wed	5:00 PM	Volleyball	Boys Junior Varsity	Seaside High School, Gym	Normal	
Team		Score					
Seaside High School		<input type="text"/>					
Watsonville High School		<input type="text"/>					
Ref #	Official	Status					
REF 1	Lance Null	On Time					
REF 2	Larry Eady	On Time					

Comments




Save Exit

Post Game Report on Arbiter

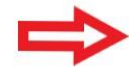
Game Report (Game: 9412)

Save Exit

Game	Date	Time	Sport	Level	Site	Status	Notes
9412	5/4/2022 Wed	5:00 PM	Volleyball	Boys Junior Varsity	Seaside High School, Gym	Normal	
Team		Score					
Seaside High School		0					
Watsonville High School		2					
Position		Official	Status				
REF 1		Lance Null	On Time				
REF 2		Larry Eady	On Time				

Comments

Any comments from the game would be listed here.



Save Exit



Have a Great
Season!
